

PRICE LIST
OUR KNOWLEDGE SETS US APART



TABLE OF CONTENTS

ITEM / SERIES	MATERIAL OF CONSTRUCTION	PAGE	ITEM / SERIES	MATERIAL OF CONSTRUCTION	PAGE
N.P.T., SOCKET WELD AND SWEAT END Y-STRAINERS			SILENT FLANGED CHECK VALVES		
Y250TIT	.Cast Iron	1	SC125 Series	.Cast Iron	17
Y125 Series	.Bronze	1	SC150 Series	.WCB / CF8M	17
Y250TBT	.Bronze	1	SC300 Series	.CF8M	18
Y300 Series	.WCB / CF8M	1	SOFT SEATS FOR SILENT CHECK VALVES		
Y600 Series	.WCB	1	Soft Seat Adder	.Viton	18
Y600 Series	.CF8M / Alloy 20	2	FOOT VALVES		
Y1500 Series	.WCB / CF8M	2-3	FV125FIBB	.Cast Iron	18
Y1500 Series	.WC6	3	FV150 Series	.WCB / CF8M	18-19
FLANGED, BUTTWELD AND RTJ Y-STRAINERS			RESILIENT SEATED BUTTERFLY VALVES BI125W/L		
Y125FIB	.Cast Iron	3	BI125W Series	.Ductile Iron	19-20
Y250FDIB	.Ductile Iron (A395)	3	BI125L Series	.Ductile Iron	20
Y150FBB	.Bronze	4	Operator Options	.All Sizes	21
Y150 Series	.WCB	4	HIGH PERFORMANCE BUTTERFLY VALVES		
Y150 Series	.CF8M	4	HB150W/L Series	.WCB / CF8M	21
Y300 Series	.WCB	4-5	HB300W/L Series	.WCB / CF8M	22
Y300 Series	.CF8M	5	HB600W/L Series	.WCB / CF8M	22-23
Y600 Series	.WCB / CF8M	5-6	Operator Options	.All Sizes	23
Y900 Series	.WCB / CF8M	6	Replacement Parts	.All Sizes	23
Y1500 Series	.WCB / CF8M	6-7	FLANGED TRIPLE DUTY VALVES		
Y-Strainer Machining Options	.ALL	7	TD125FIBE	.Cast Iron	24
Y-Strainer Spare Screen Options	304 SS / 316 SS	7	TD125FIDE	.Cast Iron	24
N.P.T. AND SOCKET WELD BASKET STRAINERS			N.P.T. AND FLANGED DRIP PAN ELBOWS		
B125TIR2	.Cast Iron	8	D125PE	.Cast Iron	24
B300 Series	.WCB / CF8M	8	AIR VENTS		
FLANGED BASKET STRAINERS			AR150	.Cast Iron	24
B125 Series	.Cast Iron	9	NEOPRENE CONNECTORS		
B150FBB1	.Bronze (B62)	9	CTNT (AUM)	.Neoprene	24
B150 Series	.WCB / CF8M	9-10	CFNS (ASM)	.Neoprene	24
FLANGED DUAL BASKET ASSEMBLY STRAINERS			CFNT (ATM)	.Neoprene	25
DB125 Series	.Cast Iron	10	UNIBODY THREADED END BALL VALVES		
FLANGED SUCTION DIFFUSERS			1RB20TCSCO	.WCB	25
SC125 Series	.Cast Iron	11	1RB20TSSCO	.CF8M	25
Basket, Dual Basket and	.304 SS / 316 SS	11	TWO PIECE THREADED END BALL VALVES		
Suction Diffuser Spare Baskets			2FB6 Series	.Brass	25
PERFORATED CONE & BASKET STRAINERS			2FB10TSSRL	.CF8M	25
TC & TB Series		12	2SB900 Series	.WCB / CF8M	26
DUAL DISC CHECK VALVES			THREE PIECE THREADED END BALL VALVES		
DC125 Series	.Cast Iron	13	3FB10TSSRL/3FBI0SWSSRL	.CF8M	26
DR150 Series	.WCB / CF8M	13-14	3SB20TCSCSCL/3SB20SWCSCL	.WCB	26
DR300 Series	.WCB / CF8M	14-15	3SB20TSSRL/3SB20SWSSRL	.CF8M	26
DR600 Series	.WCB / CF8M	15-16	SPLIT BODY FLANGED BALL VALVES		
Inconel X750 Valve Springs		16	2FB150 Series	.WCB / CF8M	26-27
SILENT THREADED (N.P.T.) CHECK VALVES			2FB300 Series	.WCB / CF8M	27
SC600TSSSSM	.CF8M	16	TERMS AND CONDITIONS		
SILENT WAFER CHECK VALVES					28
SC125 Series	.Cast Iron	16-17			
SC150 Series	.WCB / CF8M	17			

NOTES: The material in this catalogue is for general information. For specific performance data and proper material selection, consult factory or your IFC representative. Although every attempt has been made to ensure that the information contained in this catalogue is correct IFC Inc. reserves the right to change designs, materials and/or specifications without notice.

Toll Free: 1.866.872.0072 • Toll Free Fax: 1.866.872.0073

Local Calls: 905.335.8777 • Local Fax: 905.335.0977 • Email: ifc@islipflowcontrols.com • www.islipflowcontrols.com

N.P.T., Socket Weld and Sweat End Y-Strainers

ITEM #: Y250TIT											
M.A.W.P.:	400 psig at 150 F			End Connection:	N.P.T.			Drain Connection:	N.P.T.		
Body Material:	Cast Iron			Screen:	304 SS			Gasket:	Non-Asbestos		
Size:	1/4"	3/8"	1/2"	3/4"	1"	1-1/4"	1-1/2"	2"	2-1/2"	3"	
Item Price:	11.40	11.40	11.40	17.60	21.95	33.10	44.55	73.65	154.00	178.00	
Sp. Gasket Price:	1.38	1.38	1.38	1.79	1.95	2.27	2.27	4.22	7.79	8.28	
Std. Screen Size:	0.032"	0.032"	0.032"	0.032"	0.032"	0.032"	0.032"	0.032"	0.045"	0.045"	
Item Weight - Lbs.:	1.5	1.5	1.5	2.5	3	5.5	8	13	22	30	

ITEM #: Y125TBT / Y125SBT											
M.A.W.P.:	200 psig at 150 F			End Connection:	N.P.T. / Sweat			Drain Connection:	N.P.T.		
Body Material:	Bronze (B62)			Screen:	304 SS			Gasket:	Teflon		
Size:	1/4"	3/8"	1/2"	3/4"	1"	1-1/4"	1-1/2"	2"	2-1/2"	3"	
Item Price:	26.25	26.25	26.25	36.40	55.15	83.00	116.00	176.00	285.00	425.00	
Sp. Gasket Price:	2.07	2.07	2.07	2.38	2.52	3.12	3.41	3.55	3.86	4.15	
Std. Screen Size:	0.032"	0.032"	0.032"	0.032"	0.032"	0.032"	0.032"	0.032"	0.045"	0.045"	
Item Weight - Lbs.:	0.5	0.5	0.5	0.75	1.25	1.75	2.5	4	11	16	

ITEM #: Y250TBT											
M.A.W.P.:	400 psig at 150 F			End Connection:	N.P.T. / B.S.P.T.			Drain Connection:	N.P.T.		
Body Material:	Bronze (B62)			Screen:	304 SS			Gasket:	Silicon		
Size:	1/2"	3/4"	1"	1 1/4"	1 1/2"	2"	2 1/2"	3"			
Item Price:	40.50	54.30	86.60	119.25	182.50	305.00	525.00	710.00			
Sp. Gasket Price:	1.73	1.88	2.51	2.98	4.07	6.42	7.84	9.09			
Std. Screen Size:	0.032"	0.032"	0.032"	0.032"	0.032"	0.032"	0.045"	0.045"			
Item Weight - Lbs.:	1.25	1.5	2	3	4	7.5	9.75	13			

ITEM #: Y300TST / Y300SWST											
M.A.W.P.:	740 psig at 100 F			End Connection:	N.P.T. / Socket Weld			Drain Connection:	N.P.T.		
Body Material:	Carbon Steel (WCB)			Screen:	304 SS			Gasket:	Teflon		
Size:	1/4"	3/8"	1/2"	3/4"	1"	1-1/4"	1-1/2"	2"	2-1/2"	3"	
Item Price:	56.00	56.00	56.00	67.00	96.00	130.00	152.00	257.00	530.00	795.00	
Sp. Gasket Price:	5.28	5.28	5.28	5.28	7.92	7.92	10.56	10.56	10.56	10.56	
Std. Screen Size:	0.032"	0.032"	0.032"	0.032"	0.032"	0.032"	0.032"	0.032"	0.045"	0.045"	
Item Weight - Lbs.:	0.5	0.5	0.5	0.82	1.5	2	2.75	4.25	6	8	

ITEM #: Y300TSST / Y300WSST											
M.A.W.P.:	720 psig at 100 F			End Connection:	N.P.T. / Socket Weld			Drain Connection:	N.P.T.		
Body Material:	316 SS (CF8M)			Screen:	304 SS			Gasket:	Teflon		
Size:	1/4"	3/8"	1/2"	3/4"	1"	1-1/4"	1-1/2"	2"	2-1/2"	3"	
Item Price:	109.00	109.00	109.00	130.00	205.00	260.00	300.00	515.00	1020.00	1530.00	
Sp. Gasket Price:	5.14	5.14	5.14	5.14	7.71	7.71	10.27	10.27	10.27	10.27	
Std. Screen Size:	0.032"	0.032"	0.032"	0.032"	0.032"	0.032"	0.032"	0.032"	0.045"	0.045"	
Item Weight - Lbs.:	0.5	0.5	0.5	0.82	1.5	2	2.75	4.25	6	8	

ITEM #: Y600TST / Y600SWST / Y600TSB / Y600SWSB											
M.A.W.P.:	1480 psig at 100 F			End Connection:	N.P.T. / Socket Weld			Drain Connection:	N.P.T.		
Body Material:	Carbon Steel (WCB)			Screen:	304 SS			Gasket:	304 SS Sp Wound		
Size:	1/2"	3/4"	1"	1 1/4"	1 1/2"	2"	2 1/2"	3"			
Item Price:	56.00	67.00	100.00	135.00	178.00	255.00	1380.00	1735.00			
Sp. Gasket Price:	12.99	12.99	15.95	18.35	19.76	24.00	120.00	120.00			
Std. Screen Size:	0.032"	0.032"	0.032"	0.032"	0.032"	0.032"	0.045"	0.045"			
Item Weight - Lbs.:	2	3	5	7	10	15	63	77			

N.P.T., Socket Weld and Sweat End Y-Strainers Cont'd

ITEM #: Y600TSST / Y600SWSST / Y600TSSB / Y600SWSSB										
M.A.W.P.:	1440 psig at 100 F			End Connection:	N.P.T. / Socket Weld			Drain Connection:	N.P.T.	
Body Material:	316 SS (CF8M)			Screen:	304 SS			Gasket:	304 SS Sp Wound	
Size:	1/2"	3/4"	1"	1-1/4"	1-1/2"	2"	2-1/2"	3"		
Item Price:	116.00	150.00	265.00	440.00	520.00	750.00	3490.00	4335.00		
Sp. Gasket Price:	9.60	12.99	15.95	18.35	19.76	24.00	120.00	120.00		
Std. Screen Size:	0.032"	0.032"	0.032"	0.032"	0.032"	0.032"	0.045"	0.045"		
Item Weight - Lbs.:	2	3	5	7	10	15	63	77		

ITEM #: Y600TLCCT / Y600SWLCCT										
M.A.W.P.:	1440 psig at 100 F			End Connection:	N.P.T. / Socket Weld			Drain Connection:	N.P.T.	
Body Material:	Low Temp C.S.			Screen:	304 SS			Gasket:	304 SS Sp Wound	
Size:	1/2"	3/4"	1"	1-1/4"	1-1/2"	2"				
Item Price:	130.00	147.00	255.00	P.O.A.	480.00	685.00				
Sp. Gasket Price:	9.60	12.99	15.95		19.76	24.00				
Std. Screen Size:	0.032"	0.032"	0.032"		0.032"	0.032"				
Item Weight - Lbs.:	2	3	5		10	15				

ITEM #: Y600TA20T / Y600SWA20T										
M.A.W.P.:	1200 psig at 100 F			End Connection:	N.P.T. / Socket Weld			Drain Connection:	N.P.T.	
Body Material:	Alloy 20 (CN7M)			Screen:	Alloy 20 (CN7M)			Gasket:	Alloy 20 Sp Wound	
Size:	1/2"	3/4"	1"	1-1/4"	1-1/2"	2"				
Item Price:	317.00	391.00	645.00	P.O.A.	1230.00	1820.00				
Sp. Gasket Price:	110.12	110.12	123.29		123.29	130.82				
Std. Screen Size:	0.032"	0.032"	0.032"		0.032"	0.032"				
Item Weight - Lbs.:	2	3	5		10	15				

ITEM #: Y1500TST / Y1500SWST										
M.A.W.P.:	3705 psig at 100 F			End Connection:	N.P.T. / Socket Weld			Drain Connection:	N.P.T.	
Body Material:	Carbon Steel (WCB)			Screen:	304 SS			Gasket:	304 SS Sp. Wound	
Size:	1/2"	3/4"	1"							
Item Price:	105.00	165.00	285.00							
Sp. Gasket Price:	9.60	12.99	15.95							
Std. Screen Size:	0.032"	0.032"	0.032"							
Item Weight - Lbs.:	2.5	4	7							

ITEM #: Y1500TSST / Y1500SWSST										
M.A.W.P.:	3600 psig at 100 F			End Connection:	N.P.T. / Socket Weld			Drain Connection:	N.P.T.	
Body Material:	316 SS (CF8M)			Screen:	304 SS			Gasket:	304 SS Sp. Wound	
Size:	1/2"	3/4"	1"							
Item Price:	242.00	330.00	600.00							
Sp. Gasket Price:	9.60	12.99	15.95							
Std. Screen Size:	0.032"	0.032"	0.032"							
Item Weight - Lbs.:	2.5	4	7							

ITEM #: Y1500TSB / Y1500SWSB										
M.A.W.P.:	3750 psig at 100 F			End Connection:	N.P.T. / Socket Weld			Drain Connection:	Optional	
Body Material:	Carbon Steel (WCB)			Screen:	304 SS			Gasket:	304 SS Sp. Wound	
Size:	1/2"	3/4"	1"	1 1/4"	1 1/2"	2"				
Item Price:	225.00	355.00	620.00	665.00	665.00	915.00				
Sp. Gasket Price:	16.80	16.80	21.60	26.40	26.40	36.00				
Std. Screen Size:	0.032"	0.032"	0.032"	0.032"	0.032"	0.032"				
Item Weight - Lbs.:	7	10	16	22	22	30				

N.P.T., Socket Weld and Sweat End Y-Strainers Cont'd

ITEM #: Y1500TSSB / Y1500SWSSB											
M.A.W.P.:	3600 psig at 100 F			End Connection:	N.P.T. / Socket Weld			Drain Connection:	Optional		
Body Material:	316 SS (CF8M)			Screen:	304 SS			Gasket:	304 SS Sp. Wound		
Size:	1/2"	3/4"	1"	1 1/4"	1 1/2"	2"					
Item Price:	450.00	590.00	945.00	1620.00	1620.00	2265.00					
Sp. Gasket Price:	16.80	16.80	21.60	26.40	26.40	36.00					
Std. Screen Size:	0.032"	0.032"	0.032"	0.032"	0.032"	0.032"					
Item Weight - Lbs.:	7	10	16	22	22	30					

ITEM #: Y1500T52CMB / Y1500SW52CMB											
M.A.W.P.:	3750 psig at 100 F			End Connection:	N.P.T. / Socket Weld			Drain Connection:	N.P.T.		
Body Material:	Chr. Molly (WC6)			Screen:	304 SS			Gasket:	304 SS Sp. Wound		
Size:	1/2"	3/4"	1"	1 1/4"	1 1/2"	2"					
Item Price:	375.00	530.00	660.00	1055.00	1190.00	1540.00					
Sp. Gasket Price:	9.60	12.99	21.60	26.40	26.40	36.00					
Std. Screen Size:	0.032"	0.032"	0.032"	0.032"	0.032"	0.032"					
Item Weight - Lbs.:	2.5	4	7	22	22	30					

ITEM #: Y1500T52CMT / Y1500SW52CMT											
M.A.W.P.:	3750 psig at 100 F			End Connection:	N.P.T. / Socket Weld			Drain Connection:	N.P.T.		
Body Material:	Chr. Molly (WC6)			Screen:	304 SS			Gasket:	304 SS Sp. Wound		
Size:	1/2"	3/4"	1"	1 1/4"	1 1/2"	2"					
Item Price:	145.00	230.00	400.00								
Sp. Gasket Price:	8.00	10.82	18.00								
Std. Screen Size:	0.032"	0.032"	0.032"								
Item Weight - Lbs.:	2.5	4	7								

Flanged, Butt Weld and RTJ Y-Strainers

ITEM #: Y125FIB											
M.A.W.P.:	200/150 psig at 150 F			End Connection:	125 Lb. FF Flanged			Drain Connection:	N.P.T.		
Body Material:	Cast Iron			Screen:	304 SS			Gasket:	Graphite/Blueguard		
Size:	2"	2 1/2"	3"	4"	5"	6"	8"	10"	12"	14"	
Item Price:	147.00	173.00	207.00	300.00	480.00	620.00	1020.00	2045.00	2550.00	5970.00	
Sp. Gasket Price:	22.59	25.24	29.12	37.29	52.06	67.94	94.06	127.94	160.24	232.06	
Std. Screen Size:	0.045"	0.045"	0.045"	0.125"	0.125"	0.125"	0.125"	0.125"	0.125"	0.125"	
Item Weight - Lbs.:	22	35	43	75	115	154	243	390	650	815	
Size:	16"	18"	20"	24"							
Item Price:	8290.00	9390.00	11600.00	14560.00							
Sp. Gasket Price:	297.35	472.59	688.24	847.06							
Std. Screen Size:	0.125"	0.125"	0.125"	0.125"							
Item Weight - Lbs.:	1224	1895	3350	4705							

ITEM #: Y250FDIB											
M.A.W.P.:	500 psig at 150 F			End Connection:	250 Lb. RF Flanged			Drain Connection:	N.P.T.		
Body Material:	Ductile Iron (A395)			Screen:	304 SS			Gasket:	Graphite		
Size:	2"	2 1/2"	3"	4"	5"	6"	8"	10"	12"		
Item Price:	320.00	440.00	610.00	1015.00	1320.00	1875.00	2645.00	4860.00	7660.00		
Sp. Gasket Price:	22.59	25.24	29.12	37.29	52.06	67.94	94.06	127.94	160.24		
Std. Screen Size:	0.045"	0.045"	0.045"	0.125"	0.125"	0.125"	0.125"	0.125"	0.125"		
Item Weight - Lbs.:	28	38	54	110	160	224	468	590	890		

Flanged, Butt weld and RTJ Y-Strainers Cont'd

ITEM #: Y150FBB									
M.A.W.P.:	225 psig at 150 F		End Connection:		150 Lb. RF Flanged		Drain Connection:		N.P.T.
Body Material:	Bronze (B62)		Screen:		304 SS		Gasket:		Teflon
Size:	2"	2 1/2"	3"	4"	5"	6"	8"	10"	12"
Item Price:	1355.00	1900.00	2380.00	4360.00	6465.00	8490.00	14580.00	23705.00	34300.00
Sp. Gasket Price:	10.59	11.47	12.00	12.71	60.00	75.00	120.00	180.00	240.00
Std. Screen Size:	0.045"	0.045"	0.045"	0.125"	0.125"	0.125"	0.125"	0.125"	0.125"
Item Weight - Lbs.:	20	32	36	61	110	160	210	440	585

ITEM #: Y150FSB												
M.A.W.P.:	285 psig at 100 F			End Connection:			150 Lb. RF Flanged			Drain Connection:		N.P.T.
Body Material:	Carbon Steel (WCB)			Screen:			304 SS			Gasket:		Teflon
Size:	1/2"	3/4"	1"	1-1/4"	1-1/2"	2"	2-1/2"	3"	4"	5"		
Item Price:	142.00	187.00	255.00	P.O.A.	330.00	360.00	505.00	620.00	1000.00	1485.00		
Sp. Gasket Price:	12.99	12.99	15.95		18.35	20.24	20.47	22.59	24.71	48.00		
Std. Screen Size:	0.032"	0.032"	0.032"		0.032"	0.045"	0.045"	0.045"	0.125"	0.125"		
Item Weight - Lbs.:	5.5	6.5	9		12	20	32	36	61	110		
Size:	6"	8"	10"	12"	14"	16"	18"	20"	24"			
Item Price:	1850.00	2985.00	6720.00	9070.00	P.O.A.	P.O.A.	P.O.A.	P.O.A.	P.O.A.			
Sp. Gasket Price:	60.71	96.00	144.00	192.00								
Std. Screen Size:	0.125"	0.125"	0.125"	0.125"								
Item Weight - Lbs:	160	210	440	585								

ITEM #: Y150FSSB												
M.A.W.P.:	275 psig at 100 F			End Connection:			150 Lb. RF Flanged			Drain Connection:		N.P.T.
Body Material:	316 SS (CF8M)			Screen:			304 SS			Gasket:		Teflon
Size:	1/2"	3/4"	1"	1-1/4"	1-1/2"	2"	2-1/2"	3"	4"	5"		
Item Price:	319.00	405.00	560.00	690.00	705.00	985.00	1635.00	2020.00	2995.00	5200.00		
Sp. Gasket Price:	12.99	12.99	15.95	18.35	18.35	20.47	22.59	24.71	29.65	48.00		
Std. Screen Size:	0.032"	0.032"	0.032"		0.032"	0.045"	0.045"	0.045"	0.125"	0.125"		
Item Weight - Lbs:	5.5	6.5	9		12	20	32	36	61	110		
Size:	6"	8"	10"	12"	14"	16"	18"	20"	24"			
Item Price:	6150.00	9900.00	20700.00	28850.00	P.O.A.	P.O.A.	P.O.A.	P.O.A.	P.O.A.			
Sp. Gasket Price:	60.71	96.00	144.00	192.00								
Std. Screen Size:	0.125"	0.125"	0.125"	0.125"								
Item Weight - Lbs:	160	210	440	585								

ITEM #: Y300FSB												
M.A.W.P.:	740 psig at 100 F			End Connection:			300 Lb. RF Flanged			Drain Connection:		N.P.T.
Body Material:	Carbon Steel (WCB)			Screen:			304 SS			Gasket:		304 SS Sp. Wound
Size:	1/2"	3/4"	1"	1-1/4"	1-1/2"	2"	2-1/2"	3"	4"	5"		
Item Price:	170.00	270.00	350.00	450.00	450.00	450.00	655.00	915.00	1345.00	3190.00		
Sp. Gasket Price:	24.00	24.00	24.00	0.00	24.00	24.00	28.80	48.00	48.00	53.65		
Std. Screen Size:	0.032"	0.032"	0.032"		0.032"	0.045"	0.045"	0.045"	0.125"			
Item Weight - Lbs:	8	14	15		26	32	36	55	88			
Size:	6"	8"	10"	12"	14"	16"	18"	20"	24"			
Item Price:	2870.00	4740.00	8230.00	12840.00	P.O.A.	P.O.A.	P.O.A.	P.O.A.	P.O.A.			
Sp. Gasket Price:	53.65	96.00	144.00	192.00								
Std. Screen Size:	0.125"	0.125"	0.125"	0.125"								
Item Weight - Lbs:	200	290	520	680								

Flanged, Butt weld and RTJ Y-Strainers Cont'd

ITEM #: Y300BWSB									
M.A.W.P.:	740 psig at 100 F		End Connection:		Butt weld		Drain Connection:		N.P.T.
Body Material:	Carbon Steel (WCB)		Screen:		304 SS		Gasket:		304 SS Sp. Wound
Size:	2"	2 1/2"	3"	4"	5"	6"	8"	10"	12"
Item Price:	1330.00	1555.00	1985.00	2255.00	3660.00	3660.00	4985.00	7940.00	10250.00
Sp. Gasket Price:	24.00	28.80	48.00	48.00	84.71	96.00	52.94	144.00	
Std. Screen Size:	0.045"	0.045"	0.045"	0.125"	0.125"	0.125"	0.125"	0.125"	0.125"
Item Weight - Lbs:	15	25	45	68	90	120	170	360	550

ITEM #: Y300FSSB										
M.A.W.P.:	720 psig at 100 F		End Connection:		300 Lb. RF Flanged		Drain Connection:		N.P.T.	
Body Material:	316 SS (CF8M)		Screen:		304 SS		Gasket:		304 SS Sp. Wound	
Size:	1/2"	3/4"	1"	1-1/4"	1-1/2"	2"	2-1/2"	3"	4"	5"
Item Price:	456.00	704.00	770.00	P.O.A.	1490.00	1355.00	2130.00	2640.00	4360.00	P.O.A.
Sp. Gasket Price:	24.00	24.00	24.00		24.00	24.00	29.65	48.00	48.00	
Std. Screen Size:	0.032"	0.032"	0.032"		0.032"	0.045"	0.045"	0.045"	0.125"	
Item Weight - Lbs:	8	14	15		26	32	36	55	88	
Size:	6"	8"	10"	12"	14"	16"	18"	20"	24"	
Item Price:	8970.00	15275.00	28200.00	43815.00	P.O.A.	P.O.A.	P.O.A.	P.O.A.	P.O.A.	
Sp. Gasket Price:	53.65	53.65	144.00	192.00						
Std. Screen Size:	0.125"	0.125"	0.125"	0.125"						
Item Weight - Lbs:	200	290	520	680						

ITEM #: Y600FSB									
M.A.W.P.:	1480 psig at 100 F		End Connection:		RF Flanged		Drain Connection:		N.P.T.
Body Material:	Carbon Steel (WCB)		Screen:		304 SS		Gasket:		304 SS Sp. Wound
Size:	2"	2 1/2"	3"	4"	5"	6"	8"	10"	12"
Item Price:	945.00	P.O.A.	1930.00	3355.00	P.O.A.	6210.00	10100.00	19315.00	28550.00
Sp. Gasket Price:	48.00		72.00	96.00		120.00	144.00	192.00	300.71
Std. Screen Size:	0.045"		0.045"	0.125"		0.125"	0.125"	0.125"	0.125"
Item Weight - Lbs:	45		109	197		409	710	1430	1750

ITEM #: Y600RTJSB									
M.A.W.P.:	1480 psig at 100 F		End Connection:		RTJ Flanged		Drain Connection:		N.P.T.
Body Material:	Carbon Steel (WCB)		Screen:		304 SS		Gasket:		304 SS Sp. Wound
Size:	2"	2 1/2"	3"	4"	5"	6"	8"	10"	12"
Item Price:	1045.00	P.O.A.	2115.00	3695.00	P.O.A.	6830.00	P.O.A.	P.O.A.	P.O.A.
Sp. Gasket Price:	48.00		72.00	96.00		120.00			
Std. Screen Size:	0.045"		0.045"	0.125"		0.125"	0.125"	0.125"	0.125"
Item Weight - Lbs:	45		109	197		409	710	1430	1750

ITEM #: Y600FSSB									
M.A.W.P.:	1440 psig at 100 F		End Connection:		RF Flanged		Drain Connection:		N.P.T.
Body Material:	316 SS (CF8M)		Screen:		304 SS		Gasket:		304 SS Sp. Wound
Size:	2"	2 1/2"	3"	4"	5"	6"	8"	10"	12"
Item Price:	2940.00	P.O.A.	5430.00	10920.00	P.O.A.	19850.00	31615.00	59445.00	77045.00
Sp. Gasket Price:	48.00		72.00	96.00		120.00	144.00	192.00	300.71
Std. Screen Size:	0.045"		0.045"	0.125"		0.125"	0.125"	0.125"	0.125"
Item Weight - Lbs:	45		109	197		409	710	1430	1750

Flanged, Butt weld and RTJ Y-Strainers Cont'd

ITEM #: Y600RTJSSB										
M.A.W.P.:	1440 psig at 100 F		End Connection:		RTJ Flanged		Drain Connection:		N.P.T.	
Body Material:	316 SS (CF8M)		Screen:		304 SS		Gasket:		304 SS Sp. Wound	
Size:	2"	2 1/2"	3"	4"	5"	6"	8"	10"	12"	
Item Price:	3230.00	P.O.A.	5970.00	12010.00	P.O.A.	21835.00				
Sp. Gasket Price:	48.00		72.00	96.00		120.00	144.00	192.00	300.71	
Std. Screen Size:	0.045"		0.045"	0.125"		0.125"	0.125"	0.125"	0.125"	
Item Weight - Lbs:	45		109	197		409	710	1430	1750	

ITEM #: Y900FSB										
M.A.W.P.:	2220 psig at 100 F		End Connection:		RF Flanged		Drain Connection:		Optional	
Body Material:	Carbon Steel (WCB)		Screen:		304 SS		Gasket:		304 SS Sp. Wound	
Size:	2"	2 1/2"	3"	4"	5"	6"	8"	10"	12"	
Item Price:	2135.00	P.O.A.	2685.00	4140.00	P.O.A.	9195.00	16360.00	23510.00	P.O.A.	
Sp. Gasket Price:	48.00		72.00	96.00		120.00	144.00	192.00		
Std. Screen Size:	0.045"	0.045"	0.045"	0.125"		0.125"	0.125"	0.125"		
Item Weight - Lbs:	125	145	163	253		550	1075	1950		

ITEM #: Y900RTJSB										
M.A.W.P.:	2220 psig at 100 F		End Connection:		RTJ Flanged		Drain Connection:		Optional	
Body Material:	Carbon Steel (WCB)		Screen:		304 SS		Gasket:		304 SS Sp. Wound	
Size:	2"	2 1/2"	3"	4"	5"	6"	8"	10"	12"	
Item Price:	2345.00	P.O.A.	2950.00	4550.00	P.O.A.	10110.00	17995.00	P.O.A.	P.O.A.	
Sp. Gasket Price:	48.00		72.00	96.00		120.00	144.00			
Std. Screen Size:	0.045"	0.045"	0.045"	0.125"		0.125"	0.125"	0.125"		
Item Weight - Lbs:	125	145	163	253		550	1075	1950		

ITEM #: Y900FSSB										
M.A.W.P.:	2160 psig		End Connection:		RF Flanged		Drain Connection:		Optional	
Body Material:	316 SS (CF8M)		Screen:		304 SS		Gasket:		304 SS Sp. Wound	
Size:	2"	2 1/2"	3"	4"	5"	6"	8"	10"	12"	
Item Price:	6595.00	P.O.A.	8590.00	12975.00	P.O.A.	26535.00	P.O.A.	P.O.A.	P.O.A.	
Sp. Gasket Price:	48.00		72.00	96.00		120.00				
Std. Screen Size:	0.045"	0.045"	0.045"	0.125"		0.125"				
Item Weight - Lbs:	125	145	163	253		550				

ITEM #: Y900RTJSSB										
M.A.W.P.:	2160 psig		End Connection:		RTJ Flanged		Drain Connection:		Optional	
Body Material:	316 SS (CF8M)		Screen:		304 SS		Gasket:		304 SS Sp. Wound	
Size:	2"	2 1/2"	3"	4"	5"	6"	8"	10"	12"	
Item Price:	7260.00	P.O.A.	9450.00	14270.00	P.O.A.	30625.00	P.O.A.	P.O.A.	P.O.A.	
Sp. Gasket Price:	48.00		72.00	96.00		120.00				
Std. Screen Size:	0.045"	0.045"	0.045"	0.125"		0.125"				
Item Weight - Lbs:	125	145	163	253		550				

ITEM #: Y1500FSB										
M.A.W.P.:	3700 psig at 100 F		End Connection:		RF Flanged		Drain Connection:		Optional	
Body Material:	Carbon Steel (WCB)		Screen:		304 SS		Gasket:		304 SS Sp. Wound	
Size:	2"	2 1/2"	3"	4"	5"	6"	8"	10"	12"	
Item Price:	2135.00	2925.00	4260.00	6275.00	P.O.A.	13360.00	P.O.A.	P.O.A.	P.O.A.	
Sp. Gasket Price:	48.00	72.00	72.00	96.00		120.00				
Std. Screen Size:	0.045"	0.045"	0.045"	0.125"		0.125"				
Item Weight - Lbs:	125	197	234	355		812				

Flanged, Butt weld and RTJ Y-Strainers Cont'd

ITEM #: Y1500RTJSB										
M.A.W.P.:	3700 psig at 100 F		End Connection:		RTJ Flanged		Drain Connection:		Optional	
Body Material:	Carbon Steel (WCB)		Screen:		304 SS		Gasket:		304 SS Sp. Wound	
Size:	2"	2 1/2"	3"	4"	5"	6"	8"	10"	12"	
Item Price:	2343.00	P.O.A.	4680.00	6900.00	P.O.A.	14695.00	P.O.A.	P.O.A.	P.O.A.	
Sp. Gasket Price:	48.00		72.00	96.00		120.00				
Std. Screen Size:	0.045"		0.045"	0.125"		0.125"				
Item Weight - Lbs:	125		234	355		812				

ITEM #: Y1500FSSB										
M.A.W.P.:	3600 psig at 100 F		End Connection:		RF		Drain Connection:		Optional	
Body Material:	316 SS (CF8M)		Screen:		304 SS		Gasket:		304 SS Sp. Wound	
Size:	2"	2 1/2"	3"	4"	5"	6"	8"	10"	12"	
Item Price:	6595.00	9680.00	14395.00	19895.00	P.O.A.	45055.00	P.O.A.	P.O.A.	P.O.A.	
Sp. Gasket Price:	48.00	72.00	72.00	96.00		120.00				
Std. Screen Size:	0.045"	0.045"	0.045"	0.125"		0.125"				
Item Weight - Lbs:	125	197	234	355		812				

ITEM #: Y1500RTJSSB										
M.A.W.P.:	3600 psig at 100 F		End Connection:		RTJ Flanged		Drain Connection:		Optional	
Body Material:	316 SS (CF8M)		Screen:		304 SS		Gasket:		304 SS Sp. Wound	
Size:	2"	2 1/2"	3"	4"	5"	6"	8"	10"	12"	
Item Price:	7260.00	P.O.A.	14395.00	21880.00	P.O.A.	49560.00	P.O.A.	P.O.A.	P.O.A.	
Sp. Gasket Price:	48.00		72.00	96.00		120.00				
Std. Screen Size:	0.045"		0.045"	0.125"		0.125"				
Item Weight - Lbs:	125		234	355		812				

Y Strainer Machining and Spare Screens

ITEM: Adder Prices to Machine Flanged Units to Butt weld Connections										
ANSI Class Rating:	600 lb., 900 lb., 1500 lb.									
Body Material:	All materials									
Size:	2"	2 1/2"	3"	4"	5"	6"	8"	10"	12"	
Price Adder:	3360.00	P.O.A.	4440.00	7582.00	P.O.A.	8654.00	9741.00	P.O.A.	P.O.A.	
600 lb. Sched.	40.00		40.00	40.00		40.00	40.00			
900 lb. Sched.	80.00		80.00	80.00		80.00	80.00			
1500 lb. Sched.	80.00		80.00	120.00		120.00	140.00			

ITEM: Spare Screens										
Screen Material:	Type 304 SS (for 316 SS, multiply by 1.5)									
Size:	1/4"	3/8"	1/2"	3/4"	1"	1-1/4"	1-1/2"	2"	2-1/2"	
1/32", 3/64", 1/16", 3/32", 1/8", 5/32", 3/16"	16.00	16.00	16.00	18.00	30.00	45.00	51.00	69.00	102.00	
1/4", 3/8", 1/2" PERF										
20, 30, 40, 50, 60, 80, 100,, 125, 150, 200, 250 300, MESH LINING ONLY	9.00	9.00	9.00	10.00	16.00	23.00	26.00	42.00	57.00	
MESH COMPLETE W/ PERF. SUPPORT	24.00	24.00	24.00	29.00	45.00	69.00	77.00	110.00	158.00	
Size:	3"	4"	5"	6"	8"	10"	12"	14"	16"	
1/32", 3/64", 1/16", 3/32", 1/8", 5/32", 3/16"	136.00	226.00	328.00	452.00	757.00	1108.00	1525.00	1999.00	2530.00	
1/4", 3/8", 1/2" PERF										
20, 30, 40, 50, 60, 80, 100,, 125, 150, 200, 250 300, MESH LINING ONLY	69.00	113.00	164.00	226.00	378.00	553.00	763.00	1000.00	1265.00	
MESH COMPLETE W/ PERF. SUPPORT	204.00	339.00	492.00	678.00	1136.00	1660.00	2288.00	2999.00	3796.00	

N.P.T. and Socket Weld Basket Strainers

ITEM #:	B125TIR2						Cover Type:		Rotating
M.A.W.P.:	200 psig at 100 F		End Connection:		N.P.T.		Drain Connection:		N.P.T.
Body Material:	Cast Iron		Screen:		304 SS		Gasket:		Buna-N O-Ring
Size:	1/4"	3/8"	1/2"	3/4"	1"	1 1/2"	2"	2 1/2"	3"
Item Price:	450.00	450.00	450.00	510.00	585.00	615.00	805.00	890.00	1115.00
Sp. Gasket Price:	13.55	13.55	13.55	13.55	13.55	16.26	17.62	23.04	28.12
Std. Screen Size:	0.032"	0.032"	0.032"	0.032"	0.032"	0.032"	0.032"	0.45"	0.45"
Item Weight - Lbs:	10	18	10	18	18	30	50	62	62

ITEM #:	B300TSB2 / B300SWSB2						Cover Type:		Bolted
M.A.W.P.:	740 psig at 100 F		End Connection:		N.P.T. / Socket Weld		Drain Connection:		N.P.T.
Body Material:	Carbon Steel (WCB)		Screen:		304 SS		Gasket:		304 SS Sp. Wound
Size:	1/2"	3/4"	1"	1 1/4"	1 1/2"	2"			
Item Price:	365.00	495.00	495.00	755.00	755.00	1030.00			
Sp. Gasket Price:	10.59	10.59	10.59	10.59	10.59	10.59			
Std. Screen Size:	0.032"	0.032"	0.032"	0.032"	0.032"	0.032"			
Item Weight - Lbs:	18	24	24	43	43	58			

ITEM #:	B300TSC2 / B300SWSC2						Cover Type:		Bolted
M.A.W.P.:	100 psig at ambient		End Connection:		N.P.T. / Socket Weld		Drain Connection:		N.P.T.
Body Material:	Carbon Steel (WCB)		Screen:		304 SS		Gasket:		Rubber
Size:	1/2"	3/4"	1"	1 1/4"	1 1/2"	2"			
Item Price:	485.00	615.00	615.00	955.00	955.00	1230.00			
Sp. Gasket Price:	12.28	12.28	12.28	12.28	12.28	12.28			
Std. Screen Size:	0.032"	0.032"	0.032"	0.032"	0.032"	0.032"			
Item Weight - Lbs:	20	26	26	45	45	60			

ITEM #:	B300TSSB2 / B300SWSSB2						Cover Type:		Bolted
M.A.W.P.:	720 psig at 100 F		End Connection:		N.P.T. / Socket Weld		Drain Connection:		N.P.T.
Body Material:	316 ss (CF8M)		Screen:		304 SS		Gasket:		304 SS Sp. Wound
Size:	1/2"	3/4"	1"	1 1/4"	1 1/2"	2"			
Item Price:	955.00	1185.00	1185.00	2100.00	2100.00	2840.00			
Sp. Gasket Price:	10.59	10.59	10.59	10.59	10.59	10.59			
Std. Screen Size:	0.032"	0.032"	0.032"	0.032"	0.032"	0.032"			
Item Weight - Lbs:	18	24	24	43	43	58			

ITEM #:	B300TSSC2 / B300SWSSC2						Cover Type:		C-Clamp
M.A.W.P.:	100 psig at ambient		End Connection:		N.P.T. / Socket Weld		Drain Connection:		N.P.T.
Body Material:	316 SS (CF8M)		Screen:		304 SS		Gasket:		Rubber
Size:	1/2"	3/4"	1"	1 1/4"	1 1/2"	2"			
Item Price:	1155.00	1385.00	1385.00	2400.00	2400.00	3140.00			
Sp. Gasket Price:	12.28	12.28	12.28	12.28	12.28	12.28			
Std. Screen Size:	0.032"	0.032"	0.032"	0.032"	0.032"	0.032"			
Item Weight - Lbs:	20	26	26	45	45	60			

Flanged Basket Strainers

ITEM #:	B125FIB1										Cover Type:	Bolted
M.A.W.P.:	200/150 psig at 150 F		End Connection:		125 Lb. FF Flanged		Drain Connection:		Optional			
Body Material:	Cast Iron		Screen:		304 SS		Gasket:		Graphite or Rubber			
Size:	2"	2-1/2"	3"	4"	5"	6"	8"	10"	12"	14"		
Item Price:	192.00	260.00	355.00	420.00	655.00	855.00	1600.00	2575.00	3910.00	7780.00		
Sp. Gasket Price:	18.35	31.24	43.24	52.41	108.00	109.41	134.12	197.65	297.65	370.59		
Std. Screen Size:	0.045"	0.045"	0.045"	0.125"	0.125"	0.125"	0.125"	0.125"	0.125"	0.125"		
Item Weight - Lbs:	22	31	42	70	90	124	270	385	670	1010		
Size:	16"	18"	20"	24"								
Item Price:	13550.00	14150.00	19215.00	25125.00								
Sp. Gasket Price:	476.47	571.76	650.12	650.12								
Std. Screen Size:	0.125"	0.125"	0.125"	0.125"								
Item Weight - Lbs:	1041	1446	1980	2790								

ITEM #:	B125FIC1										Cover Type:	C-Clamp
M.A.W.P.:	50 psig at ambient		End Connection:		125 Lb. FF Flanged		Drain Connection:		Optional			
Body Material:	Cast Iron		Screen:		304 SS		Gasket:		Buna-N O-Ring			
Size:	2"	2-1/2"	3"	4"	5"	6"	8"	10"	12"			
Item Price:	387.00	455.00	550.00	680.00	915.00	1185.00	1990.00	3095.00	5015.00			
Sp. Gasket Price:	19.41	31.76	44.12	52.94	109.41	109.41	134.12	197.65	298.24			
Std. Screen Size:	0.045"	0.045"	0.045"	0.125"	0.125"	0.125"	0.125"	0.125"	0.125"			
Item Weight - Lbs:	22	31	42	70	90	124	270	385	670			

ITEM #:	B125FIY1										Cover Type:	Yoke
M.A.W.P.:	200 psig at 150 F		End Connection:		125 Lb. FF Flanged		Drain Connection:		N.P.T.			
Body Material:	Cast Iron		Screen:		304 SS		Gasket:		Buna-N			
Size:	2"	2-1/2"	3"	4"	5"	6"	8"	10"	12"			
Item Price:	300.00	360.00	455.00	720.00	1125.00	1350.00	2130.00	3720.00	6460.00			
Sp. Gasket Price:	17.62	29.99	41.51	50.32	103.68	105.04	128.75	189.74	286.31			
Std. Screen Size:	0.0625"	0.0625"	0.0625"	0.0625"	0.125"	0.125"	0.125"	0.125"	0.125"			
Item Weight - Lbs:	27	29	42	65	95	148	198	350	720			

ITEM #:	B150FBB1										Cover Type:	Bolted
M.A.W.P.:	225 psig at 150 F		End Connection:		150 Lb. FF Flanged		Drain Connection:		N.P.T.			
Body Material:	Bronze (B62)		Screen:		304 SS		Gasket:		Teflon			
Size:	2"	2-1/2"	3"	4"	5"	6"	8"	10"	12"			
Item Price:	1665.00	2880.00	3210.00	4980.00	6615.00	9250.00	16760.00	25930.00	43870.00			
Sp. Gasket Price:	18.35	31.24	43.24	52.41	109.41	109.41	134.12	197.65	298.24			
Std. Screen Size:	0.045"	0.045"	0.045"	0.125"	0.125"	0.125"	0.125"	0.125"	0.125"			
Item Weight - Lbs:	22	31	42	70	90	124	270	385	670			

ITEM #:	B150FSB1										Cover Type:	Bolted
M.A.W.P.:	285 psig at 100 F		End Connection:		150 Lb. RF Flanged		Drain Connection:		N.P.T.			
Body Material:	Carbon Steel (WCB)		Screen:		304 SS		Gasket:		Teflon			
Size:	2"	2-1/2"	3"	4"	5"	6"	8"	10"	12"			
Item Price:	495.00	685.00	955.00	1475.00	P.O.A.	2315.00	4415.00	6740.00	10100.00			
Sp. Gasket Price:	14.68	24.99	34.59	41.93		87.53	107.29	158.12	238.59			
Std. Screen Size:	0.045"	0.045"	0.045"	0.125"		0.125"	0.125"	0.125"	0.125"			
Item Weight - Lbs:	22	31	42	70		124	270	385	670			

ITEM #:	B150FSSB1										Cover Type:	Bolted
M.A.W.P.:	275 psig at 100 F		End Connection:		150 Lb. RF Flanged		Drain Connection:		N.P.T.			
Body Material:	316 SS (CF8M)		Screen:		304 SS		Gasket:		Teflon			
Size:	2"	2-1/2"	3"	4"	5"	6"	8"	10"	12"			
Item Price:	1315.00	1500.00	2230.00	3340.00	P.O.A.	5520.00	10120.00	14475.00	21400.00			
Sp. Gasket Price:	14.68	24.99	34.59	41.93		87.53	107.29	158.12	238.59			
Std. Screen Size:	0.045"	0.045"	0.045"	0.125"		0.125"	0.125"	0.125"	0.125"			
Item Weight - Lbs:	22	31	42	70		124	270	385	670			

Flanged Basket Strainers Cont'd

ITEM #:	B150FSB2						Cover Type:		Bolted	
M.A.W.P.:	285 psig at 100 F		End Connection:		150 Lb. RF Flanged		Drain Connection:		N.P.T.	
Body Material:	Carbon Steel (WCB)		Screen:		304 SS		Gasket:		304 SS Sp. Wound	
Size:	1-1/2"	2"	3"	4"	6"	8"				
Item Price:	450.00	805.00	1465.00	2085.00	4130.00	6435.00				
Sp. Gasket Price:	18.92	18.92	38.82	48.99	97.41	120.00				
Std. Screen Size:	0.045"	0.045"	0.045"	0.125"	0.125"	0.125"				
Item Weight - Lbs:	24	46	85	120	237	372				

ITEM #:	B150FSSB2						Cover Type:		Bolted	
M.A.W.P.:	275 psig at 100 F		End Connection:		150 Lb. RF Flanged		Drain Connection:		N.P.T.	
Body Material:	316 SS (CF8M)		Screen:		304 SS		Gasket:		304 SS Sp. Wound	
Size:	1-1/2"	2"	3"	4"	6"	8"				
Item Price:	1530.00	2230.00	3800.00	5640.00	11495.00	19610.00				
Sp. Gasket Price:	18.92	18.92	38.82	48.99	97.41	120.00				
Std. Screen Size:	0.045"	0.045"	0.045"	0.125"	0.125"	0.125"				
Item Weight - Lbs:	24	46	85	120	237	372				

Flanged Dual Basket Assembly Strainers

ITEM #:	DB125FIBC2									Cover Type:		Bolted	
M.A.W.P.:	200 psig at 100 F			End Connection:			125 lb. FF Flanged			Drain Connection:		N.P.T.	
Body Material:	Cast Iron			Screen:			304 SS			Gasket:		Graphite or Rubber	
Size:	2"	2-1/2"	3"	4"	5"	6"	8"	10"	12"				
Item Price:	P.O.A.	P.O.A.	P.O.A.	6075.00	7484.00	8861.00	13916.00	23911.00	36474.00				
Sp. Gasket Price:				52.94	109.41	109.41	134.12	197.06	298.24				
Std. Screen Size:				0.125"	0.125"	0.125"	0.125"	0.125"	0.125"				
Item Weight - Lbs:				350	500	800	1350	2050	4700				

ITEM #:	DB125FICC2									Cover Type:		C-Clamp	
M.A.W.P.:	50 psig at ambient			End Connection:			125 lb. FF Flanged			Drain Connection:		N.P.T.	
Body Material:	Cast Iron			Screen:			304 SS			Gasket:		304 SS Sp. Wound	
Size:	2"	2-1/2"	3"	4"	5"	6"	8"	10"	12"				
Item Price:	P.O.A.	P.O.A.	P.O.A.	7371.00	8942.40	10238.40	15600.60	25758.00	38880.00				
Sp. Gasket Price:				70.59	118.24	118.24	151.76	215.29	321.18				
Std. Screen Size:				0.125"	0.125"	0.125"	0.125"	0.125"	0.125"				
Item Weight - Lbs:				350	500	800	1350	2050	4700				

Flanged Suction Diffusers

ITEM #:	SC125FIB										Cover Type:	Bolted
M.A.W.P.:	200/150 psig at 150 F		End Connection:		125 Lb. FF Flanged		Drain Connection:		Standard			
Body Material:	Cast Iron		Screen:		304 SS		Gasket:		Buna-N O-Ring			
Size:	2"x1-1/2"	2"x2"	2-1/2"x2"	2-1/2"x2-1/2"	3"x2"	3"x2-1/2"	3"x3"	4"x3"	4"x4"	5"x4"		
Item Price:	155.00	170.00	240.00	250.00	255.00	270.00	290.00	420.00	430.00	565.00		
Sp. Gasket Price:	16.88	21.65	28.74	28.74	39.78	39.78	39.78	48.22	48.22	100.66		
Std. Screen Size:	0.032"	0.032"	0.032"	0.032"	0.032"	0.032"	0.032"	0.125"	0.125"	0.125"		
Item Weight - Lbs:	21	21	23	32	34	45	49	55	70	92		
Size:	5"x5"	6"x4"	6"x5"	6"x6"	8"x5"	8"x6"	8"x8"	10"x8"	10"x10"	12"x8"		
Item Price:	595.00	745.00	765.00	780.00	940.00	950.00	1390.00	2060.00	2260.00	3075.00		
Sp. Gasket Price:	100.66	100.66	100.66	100.66	123.39	123.39	123.39	181.84	181.84	274.38		
Std. Screen Size:	0.125"	0.125"	0.125"	0.125"	0.125"	0.125"	0.125"	0.125"	0.125"	0.125"		
Item Weight - Lbs:	97	132	145	182	197	197	292	312	422	412		
Size:	12"x10"	12"x12"										
Item Price:	3240.00	3405.00										
Sp. Gasket Price:	274.38	274.38										
Std. Screen Size:	0.125"	0.125"										
Item Weight - Lbs:	491	573										

Basket, Dual Basket & Suction Diffuser Spare Baskets

ITEM: Spare Baskets										
Screen Material:	Type 304 SS (for 316 SS, multiply by 1.5)									
Size:	1/4"	3/8"	1/2"	3/4"	1"	1-1/4"	1-1/2"	2"	2-1/2"	
1/32", 3/64", 1/16", 3/32", 1/8", 5/32", 3/16" 1/4", 3/8", 1/2" PERF	N/A	N/A	108.00	108.00	108.00	108.00	108.00	108.00	165.00	
20, 30, 40, 50, 60, 80, 100., 125, 150, 200, 250 300, MESH LINING ONLY	N/A	N/A	55.00	55.00	55.00	55.00	55.00	55.00	84.00	
MESH COMPLETE W/ PERF. SUPPORT	N/A	N/A	162.00	162.00	162.00	162.00	162.00	162.00	249.00	
Size:	3"	4"	5"	6"	8"	10"	12"	14"	16"	
1/32", 3/64", 1/16", 3/32", 1/8", 5/32", 3/16" 1/4", 3/8", 1/2" PERF	190.00	243.00	379.00	525.00	756.00	945.00	1132.00	1322.00	1511.00	
20, 30, 40, 50, 60, 80, 100., 125, 150, 200, 250 300, MESH LINING ONLY	95.00	122.00	190.00	263.00	379.00	473.00	566.00	662.00	756.00	
MESH COMPLETE W/ PERF. SUPPORT	284.00	365.00	568.00	789.00	1135.00	1418.00	1699.00	1983.00	2266.00	

Perforated Cone & Basket Strainers

ITEM #: TC150SS4W1 / TC300SS4W1 / TC600SS4W1		Available Mesh Sizes: 20, 30, 40, 50, 60, 80, 100, 125, 150, 200, 250, 300										
Type:	Conical		Connection:	150 lb. Wafer			Face Finish:	Smooth				
Ring Material:	304 SS		Screen Material:	304 SS								
Size:	O.A.	3/4"	1"	1-1/2"	2"	2-1/2"	3"	4"	5"	6"		
Perforation:	100%	106.00	106.00	119.00	143.00	199.00	218.00	254.00	340.00	372.00		
Perf c/w Mesh		151.00	151.00	165.00	191.00	249.00	270.00	344.00	433.00	475.00		
Perforation:	150%	108.00	108.00	122.00	150.00	206.00	226.00	268.00	363.00	408.00		
Perf c/w Mesh		153.00	153.00	169.00	200.00	262.00	284.00	360.00	468.00	528.00		
Perforation:	200%	109.00	109.00	125.00	156.00	215.00	235.00	280.00	542.00	451.00		
Perf c/w Mesh		156.00	156.00	172.00	211.00	273.00	298.00	379.00	503.00	593.00		
Std. Screen Size		0.045"	0.045"	0.045"	0.045"	0.045"	0.045"	0.125"	0.125"	0.125"		
Item Weight - Lbs.:		1	1	1	1	1	1	2	2	3		
Size:	O.A.	8"	10"	12"	14"	16"	18"	20"	24"			
Perforation:	100%	464.00	638.00	744.00	913.00	1090.00	1311.00	1478.00	1968.00			
Perf c/w Mesh		619.00	875.00	1016.00	1223.00	1459.00	1750.00	1982.00	2699.00			
Perforation:	150%	524.00	748.00	906.00	1097.00	1322.00	1597.00	1826.00	2457.00			
Perf c/w Mesh		711.00	1037.00	1262.00	1496.00	1806.00	2179.00	2500.00	3437.00			
Perforation:	200%	596.00	856.00	962.00	1278.00	1531.00	1884.00	2202.00	3008.00			
Perf c/w Mesh		820.00	1198.00	1342.00	1768.00	2583.00	2608.00	3064.00	3962.00			
Std. Screen Size	0.125"	0.125"	0.125"	0.125"	0.125"	0.125"	0.125"	0.125"	0.125"			
Item Weight - Lbs.:		6	8	14	28	32	36	40	48			

ITEM #: TB150SS4W1 / TB300SS4W1 / TB600SS4W1		Available Mesh Sizes: 20, 30, 40, 50, 60, 80, 100, 125, 150, 200, 250, 300										
Type:	Basket		Connection:	150 lb. Wafer			Face Finish:	Smooth				
Ring Material:	304 SS		Screen Material:	304 SS								
Size:	O.A.	3/4"	1"	1-1/2"	2"	2-1/2"	3"	4"	5"	6"		
Perforation:	100%	106.00	106.00	119.00	143.00	199.00	218.00	255.00	340.00	372.00		
Perf c/w Mesh		151.00	151.00	165.00	191.00	249.00	270.00	343.00	433.00	475.00		
Perforation:	150%	108.00	108.00	122.00	150.00	206.00	226.00	268.00	363.00	408.00		
Perf c/w Mesh		153.00	153.00	169.00	200.00	262.00	285.00	360.00	468.00	528.00		
Perforation:	200%	109.00	109.00	125.00	156.00	215.00	235.00	280.00	542.00	451.00		
Perf c/w Mesh		155.00	155.00	172.00	211.00	273.00	298.00	379.00	503.00	593.00		
Std. Screen Size		0.045"	0.045"	0.045"	0.045"	0.045"	0.045"	0.125"	0.125"	0.125"		
Item Weight - Lbs.:		1	1	1	1	1	1	2	2	3		
Size:	O.A.	8"	10"	12"	14"	16"	18"	20"	24"			
Perforation:	100%	464.00	638.00	744.00	913.00	1090.00	1311.00	1478.00	1968.00			
Perf c/w Mesh		619.00	875.00	1016.00	1223.00	1459.00	1750.00	1982.00	2699.00			
Perforation:	150%	524.00	748.00	906.00	1097.00	1322.00	1597.00	1826.00	2457.00			
Perf c/w Mesh		711.00	1037.00	1262.00	1496.00	1806.00	2179.00	2500.00	2437.00			
Perforation:	200%	596.00	856.00	962.00	1278.00	1531.00	1884.00	2202.00	3019.00			
Perf c/w Mesh		820.00	1198.00	1342.00	1768.00	2583.00	2608.00	3064.00	4279.00			
Std. Screen Size	0.125"	0.125"	0.125"	0.125"	0.125"	0.125"	0.125"	0.125"	0.125"			
Item Weight - Lbs.:		6	8	14	28	32	36	40	48			

Dual Disc Check Valves

ITEM#: DC125WIBB											
M.A.W.P.	200/150 psig at 150 F			End Connection:	Wafer			Seat Material:	Buna-N		
Body:	Cast Iron			Disc Material:	Bronze			Spring:	Stainless Steel		
Size	2"	2-1/2"	3"	4"	5"	6"	8"	10"	12"	14"	
Item Price:	99.60	108.00	151.00	232.00	315.00	435.00	800.00	1235.00	2175.00	3640.00	
Unit Weight - Lbs	4.5	5.5	7	11.5	15	20	34	57	83	117	
Size	16"	18"	20"	24"							
Item Price:	5055.00	6785.00	8210.00	11595.00							
Unit Weight - Lbs	155	177	215	315							

ITEM#: DC125WISSB											
M.A.W.P.	200/150 psig at 150 F			End Connection:	Wafer			Seat Material:	Buna-N		
Body:	Cast Iron			Disc Material:	316 SS			Spring:	Stainless Steel		
Size	2"	2-1/2"	3"	4"	5"	6"	8"	10"	12"	14"	
Item Price:	106.00	122.00	190.00	230.00	360.00	415.00	795.00	1275.00	2100.00	3295.00	
Unit Weight - Lbs	4.5	5.5	7	11.5	15	20	34	57	83	117	
Size	16"	18"	20"	24"							
Item Price:	4675.00	6040.00	7130.00	10910.00							
Unit Weight - Lbs	155	177	215	315							

ITEM#: DR150WSSSV											
M.A.W.P.	285 psig at 100 F			End Connection:	Wafer			Seat Material:	Viton		
Body:	Carbon Steel (WCB)			Disc Material:	316 SS			Spring:	Stainless Steel		
Size	2"	2-1/2"	3"	4"	5"	6"	8"	10"	12"	14"	
Item Price:	250.00	350.00	350.00	515.00	895.00	895.00	1260.00	1855.00	2570.00	3525.00	
Unit Weight - Lbs	7	11	13	18	30	35	63	106	180	270	
Size	16"	18"	20"	24"							
Item Price:	4620.00	6670.00	7555.00	9780.00							
Unit Weight - Lbs	295	312	472	788							

ITEM#: DR150WLCSSV											
M.A.W.P.	290 psig at 100 F			End Connection:	Wafer			Seat Material:	Viton		
Body:	Carbon Steel (LCC)			Disc Material:	316 SS			Spring:	Stainless Steel		
Size	2"	2-1/2"	3"	4"	5"	6"	8"	10"	12"	14"	
Item Price:	270.00	375.00	375.00	550.00	955.00	955.00	1350.00	1985.00	2750.00	3775.00	
Unit Weight - Lbs	7	11	13	18	30	35	63	106	180	270	
Size	16"	18"	20"	24"							
Item Price:	4940.00	7140.00	8085.00	10465.00							
Unit Weight - Lbs	295	312	472	788							

ITEM#: DR150WSSSM10											
M.A.W.P.	285 psig at 100 F			End Connection:	Wafer			Seat Material:	API Overlay		
Body:	Carbon Steel (WCB)			Disc Material:	316 SS			Spring:	Inconel		
Size	2"	2-1/2"	3"	4"	5"	6"	8"	10"	12"	14"	
Item Price:	350.00	475.00	475.00	675.00	1120.00	1120.00	1780.00	2530.00	3710.00	4940.00	
Unit Weight - Lbs	7	11	13	18	30	35	63	106	180	270	
Size	16"	18"	20"	24"							
Item Price:	6790.00	9495.00	11085.00	13580.00							
Unit Weight - Lbs	295	312	472	788							

Dual Disc Check Valves Cont'd

ITEM#: DR150WSSSSV										
M.A.W.P.	275 psig at 100 F		End Connection:		Wafer		Seat Material:		Viton	
Body:	316 SS (CF8M)		Disc Material:		316 SS		Spring:		Stainless Steel	
Size	2"	2-1/2"	3"	4"	5"	6"	8"	10"	12"	14"
Item Price:	440.00	715.00	715.00	975.00	1835.00	1835.00	2425.00	3670.00	6065.00	7145.00
Unit Weight - Lbs	7	11	13	18	30	35	63	106	180	270
Size	16"	18"	20"	24"						
Item Price:	9955.00	12330.00	15410.00	20795.00						
Unit Weight - Lbs	295	312	472	788						

ITEM#: DR150WSSSSM10										
M.A.W.P.	275 psig at 100 F		End Connection:		Wafer		Seat Material:		Metal	
Body:	316 SS (CF8M)		Disc Material:		316 SS		Spring:		Inconel	
Size	2"	2-1/2"	3"	4"	5"	6"	8"	10"	12"	14"
Item Price:	540.00	840.00	840.00	1135.00	2065.00	2065.00	2940.00	4350.00	7205.00	8560.00
Unit Weight - Lbs	7		11	18	30	35	63	106	180	270
Size	16"	18"	20"	24"						
Item Price:	12155.00	15150.00	18940.00	24595.00						
Unit Weight - Lbs	295	312	472	788						

ITEM#: DR300WSSSV										
M.A.W.P.	740 psig at 100 F		End Connection:		Wafer		Seat Material:		Viton	
Body:	Carbon Steel (WCB)		Disc Material:		316 SS		Spring:		Stainless Steel	
Size	2"	2-1/2"	3"	4"	5"	6"	8"	10"	12"	14"
Item Price:	300.00	395.00	395.00	580.00	1040.00	1040.00	1680.00	2355.00	3115.00	5585.00
Unit Weight - Lbs	7	11	13	18	30	44	76	126	200	390
Size	16"	18"	20"	24"						
Item Price:	6570.00	9680.00	11120.00	12150.00						
Unit Weight - Lbs	458	650	801	1150						

ITEM#: DR300WLCSSV										
M.A.W.P.	740 psig at 100 F		End Connection:		Wafer		Seat Material:		Viton	
Body:	Carbon Steel (LCC)		Disc Material:		316 SS		Spring:		Stainless Steel	
Size	2"	2-1/2"	3"	4"	5"	6"	8"	10"	12"	14"
Item Price:	330.00	420.00	420.00	620.00	1110.00	1110.00	1800.00	2520.00	3330.00	5975.00
Unit Weight - Lbs	7	11	13	18	30	44	76	126	200	390
Size	16"	18"	20"	24"						
Item Price:	7035.00	10360.00	11895.00	13000.00						
Unit Weight - Lbs	458	650	801	1150						

ITEM#: DR300WSSSM10										
M.A.W.P.	740 psig at 100 F		End Connection:		Wafer		Seat Material:		API Overlay	
Body:	Carbon Steel (WCB)		Disc Material:		316 SS		Spring:		Inconel	
Size	2"	2-1/2"	3"	4"	5"	6"	8"	10"	12"	14"
Item Price:	400.00	520.00	520.00	740.00	1270.00	1270.00	2195.00	3030.00	4250.00	6995.00
Unit Weight - Lbs	7	11	13	18	30	44	76	126	200	390
Size	16"	18"	20"	24"						
Unit Price	8745.00	12500.00	14650.00	15950.00						
Unit Weight - Lbs	458	650	801	1150						

Dual Disc Check Valves Cont'd

ITEM#: DR300WSSSSV											
M.A.W.P.	720 psig at 100 F			End Connection:	Wafer			Seat Material:	Viton		
Body:	316 SS (CF8M)			Disc Material:	316 SS			Spring:	Stainless Steel		
Size	2"	2-1/2"	3"	4"	5"	6"	8"	10"	12"	14"	
Item Price:	530.00	835.00	835.00	1010.00	2200.00	2200.00	3820.00	4995.00	7640.00	12040.00	
Unit Weight - Lbs	7	11	13	18	30	44	76	126	200	390	
Size	16"	18"	20"	24"							
Item Price:	14970.00	22850.00	24515.00	30580.00							
Unit Weight - Lbs	458	650	801	1150							

ITEM#: DR300WSSSM10											
M.A.W.P.	720 psig at 100 F			End Connection:	Wafer			Seat Material:	Metal		
Body:	316 SS (CF8M)			Disc Material:	316 SS			Spring:	Inconel		
Size	2"	2-1/2"	3"	4"	5"	6"	8"	10"	12"	14"	
Item Price:	625.00	960.00	960.00	1175.00	2430.00	2430.00	4335.00	5670.00	8775.00	13450.00	
Unit Weight - Lbs	7	11	13	18	30	44	76	126	200	390	
Size	16"	18"	20"	24"							
Item Price:	17145.00	25680.00	28040.00	24380.00							
Unit Weight - Lbs	458	650	801	1150							

ITEM#: DR600WSSSV											
M.A.W.P.	1480 psig at 100 F			End Connection:	Wafer (RF/RJ)			Seat Material:	Viton		
Body:	Carbon Steel (WCB)			Disc Material:	316 SS			Spring:	Stainless Steel		
Size	2"	2-1/2"	3"	4"	5"	6"	8"	10"	12"	14"	
Item Price:	375.00	485.00	485.00	740.00	1715.00	1715.00	2840.00	4395.00	6330.00	7855.00	
Unit Weight - Lbs	7	11	13	28	30	80	160	260	360	410	
Size	16"	18"	20"	24"							
Item Price:	9530.00	14125.00	17040.00	21500.00							
Unit Weight - Lbs	728	870	1196	1802							

ITEM#: DR600WLCSSV											
M.A.W.P.	1500 psig at 100 F			End Connection:	Wafer (RF/RJ)			Seat Material:	Viton		
Body:	Carbon Steel (LCC)			Disc Material:	316 SS			Spring:	Stainless Steel		
Size	2"	2-1/2"	3"	4"	5"	6"	8"	10"	12"	14"	
Item Price:	400.00	520.00	520.00	795.00	1835.00	1835.00	3040.00	4700.00	6770.00	8405.00	
Unit Weight - Lbs	7	11	13	28	30	80	160	260	360	410	
Size	16"	18"	20"	24"							
Item Price:	10200.00	15115.00	18235.00	23000.00							
Unit Weight - Lbs	728	870	1196	1802							

ITEM#: DR600WSSSM10											
M.A.W.P.	1480 psig at 100 F			End Connection:	Wafer (RF/RJ)			Seat Material:	API Overlay		
Body:	Carbon Steel (WCB)			Disc Material:	316 SS			Spring:	Inconel		
Size	2"	2-1/2"	3"	4"	5"	6"	8"	10"	12"	14"	
Item Price:	475.00	610.00	610.00	905.00	1940.00	1940.00	3360.00	5075.00	7470.00	9265.00	
Unit Weight - Lbs	7	11	13	28	30	80	160	260	360	410	
Size	16"	18"	20"	24"							
Item Price:	11705.00	16950.00	20570.00	25300.00							
Unit Weight - Lbs	728	870	1196	1802							

Dual Disc Check Valves Cont'd

ITEM#: DR600WSSSV											
M.A.W.P.:	1440 psig at 100 F			End Connection:	Wafer (RF/RJ)			Seat Material:	Viton		
Body:	316 SS (CF8M)			Disc Material:	316 SS			Spring:	Stainless Steel		
Size	2"	2-1/2"	3"	4"	5"	6"	8"	10"	12"	14"	
Item Price:	619.00	950.00	950.00	1320.00	3915.00	3915.00	5580.00	12040.00	17465.00	20400.00	
Unit Weight - Lbs	7	11	13	28	30	80	160	260	360	410	
Size	16"	18"	20"	24"							
Item Price:	22315.00	31610.00	39930.00	52350.00							
Unit Weight - Lbs	728	870	1196	1802							

ITEM#: DR600WSSSM10											
M.A.W.P.:	1440 psig at 100 F			End Connection:	Wafer (RF/RJ)			Seat Material:	Metal		
Body:	316 SS (CF8M)			Disc Material:	316 SS			Spring:	Inconel		
Size	2"	2-1/2"	3"	4"	5"	6"	8"	10"	12"	14"	
Item Price:	717.00	1075.00	1075.00	1485.00	4145.00	4145.00	6095.00	12720.00	18605.00	21815.00	
Unit Weight - Lbs	7	11	13	28	30	80	160	260	360	410	
Size	16"	18"	20"	24"							
Item Price:	24485.00	34435.00	43460.00	56150.00							
Unit Weight - Lbs	728	870	1196	1802							

Dual Disc Check Valve Inconel X750 Springs

ITEM: Inconel X750 Valve Springs										
Size	2"	2-1/2"	3"	4"	5"	6"	8"	10"	12"	14"
Item Price:	130.00	165.00	165.00	220.00	305.00	305.00	690.00	900.00	1520.00	1880.00
Unit Weight - Lbs	1	1	1	1	1	2	2	3	3	3
Size	16"	18"	20"	24"						
Item Price:	2890.00	3760.00	4690.00	5050.00						
Unit Weight - Lbs	4	4	4	4						

Silent Threaded (N.P.T.) Check Valves

ITEM #: SC600TSSSM											
M.A.W.P.:	600 psig at 150 F			End Connection:	N.P.T.			Seat Material:	Metal		
Body Material:	316 SS (CF8M)			Disc Material:	316 SS (CF8M)			Spring:	Stainless Steel		
Size:	1/4"	3/8"	1/2"	3/4"	1"	1-1/4"	1-1/2"	2"	2-1/2"	3"	
Item Price:	67.70	67.70	87.00	105.00	137.00	190.00	240.00	390.00	635.00	980.00	
Item Weight - Lbs.:	1	1	1	3	3.5	4	5	5.5	6	7	
Size:	4"										
Item Price:	1680.00										
Item Weight - Lbs.:	1										

NOTE: Socketweld end caps available, consult factory for pricing and availability

Silent Wafer Check Valves

ITEM #: SC125WIBM											
M.A.W.P.:	200 psig at 150 F			End Connection:	Wafer			Seat Material:	Bronze		
Body Material:	Cast Iron			Disc Material:	Bronze			Spring:	Stainless Steel		
Size:	2"	2-1/2"	3"	4"	5"	6"	8"	10"	12"		
Item Price:	116.00	141.00	186.00	415.00	530.00	675.00	1635.00	2640.00	4760.00		
Item Weight - Lbs.:	5	7	10	18	27	39	89	173	240		

Silent Wafer Check Valves Cont'd

ITEM #: SC125WISSM										
M.A.W.P.:	200 psig at 150 F		End Connection:		Wafer		Seat Material:		Stainless Steel	
Body Material:	Cast Iron		Disc Material:		316 SS		Spring:		Stainless Steel	
Size:	2"	2-1/2"	3"	4"	5"	6"	8"	10"	12"	
Item Price:	140.00	169.00	232.00	402.00	682.00	815.00	2035.00	3310.00	5405.00	
Item Weight - Lbs.:	5	7	10	18	29	39	89	173	240	

ITEM #: SC150WSSSM										
M.A.W.P.:	285 psig at 100 F		End Connection:		Wafer		Seat Material:		316 SS	
Body Material:	Carbon Steel		Disc Material:		316 SS		Spring:		Stainless Steel	
Size:	2"	2-1/2"	3"	4"	5"	6"	8"	10"	12"	
Item Price:	172.00	218.00	295.00	520.00	835.00	1095.00	2330.00	3900.00	7190.00	
Item Weight - Lbs.:	5	7	10	18	27	39	89	173	240	

ITEM #: SC150WSSSSM										
M.A.W.P.:	275 psig at 100 F		End Connection:		Wafer		Seat Material:		316 SS	
Body Material:	316 SS (CF8M)		Disc Material:		316 SS		Spring:		Stainless Steel	
Size:	2"	2-1/2"	3"	4"	5"	6"	8"	10"	12"	
Item Price:	285.00	390.00	525.00	885.00	1540.00	2030.00	4480.00	7905.00	17715.00	
Item Weight - Lbs.:	5	7	10	18	27	39	89	173	240	

Silent Flanged Check Valves

ITEM #: SC125FIBM										
M.A.W.P.:	200/150 psig at 150 F		End Connection:		125 Lb. FF Flanged		Seat Material:		Bronze	
Body Material:	Cast Iron		Disc Material:		Bronze		Spring:		Stainless Steel	
Size:	2"	2-1/2"	3"	4"	5"	6"	8"	10"	12"	14"
Item Price:	380.00	490.00	600.00	815.00	1080.00	1365.00	2185.00	3700.00	5755.00	9770.00
Item Weight - Lbs.:	14	23	26	59	74	96	178	288	350	525
Size:	16"									
Item Price:	11100.00									
Item Weight - Lbs.:	650									

ITEM #: SC150FSSSM										
M.A.W.P.:	285 psig at 100 F		End Connection:		150 Lb. RF Flanged		Seat Material:		316 SS	
Body Material:	Carbon Steel		Disc Material:		316 SS		Spring:		Stainless Steel	
Size:	2"	2-1/2"	3"	4"	5"	6"	8"	10"	12"	14"
Item Price:	620.00	750.00	940.00	1300.00	1350.00	2210.00	4050.00	6200.00	9640.00	12765.00
Item Weight - Lbs.:	14	23	26	59	74	96	178	288	350	
Size:	16"	18"	20"	24"						
Item Price:	16650.00	P.O.A.	P.O.A.	P.O.A.						
Item Weight - Lbs.:										

ITEM #: SC150FSSSSM										
M.A.W.P.:	275 psig at 100 F		End Connection:		150 Lb. RF Flanged		Seat Material:		316 SS	
Body Material:	316 SS (CF8M)		Disc Material:		316 SS		Spring:		Stainless Steel	
Size:	2"	2-1/2"	3"	4"	5"	6"	8"	10"	12"	14"
Item Price:	1325.00	1765.00	2605.00	3085.00	4450.00	5155.00	9300.00	14850.00	28200.00	P.O.A.
Item Weight - Lbs.:	14	23	26	59	74	96	178	288	350	
Size:	16"	18"	20"	24"						
Item Price:	P.O.A.	P.O.A.	P.O.A.	P.O.A.						
Item Weight - Lbs.:										

Silent Flanged Check Valves Cont'd

ITEM #: SC300FSSSM										
M.A.W.P.:	740 psig at 100 F		End Connection:	300 Lb. RF Flanged			Seat Material:	316 SS		
Body Material:	Carbon Steel		Disc Material:	316 SS			Spring:	Stainless Steel		
Size:	2"	2-1/2"	3"	4"	5"	6"	8"	10"	12"	14"
Item Price:	1050.00	1270.00	1600.00	2410.00	3330.00	4090.00	7490.00	11500.00	16910.00	P.O.A.
Item Weight - Lbs.:	14	23	26	59	74	96	178	288	350	
Size:	16"	18"	20"	24"						
Item Price:	P.O.A.	P.O.A.	P.O.A.	P.O.A.						
Item Weight - Lbs.:										

ITEM #: SC300FSSSM										
M.A.W.P.:	720 psig at 100 F		End Connection:	300 Lb. RF Flanged			Seat Material:	316 SS		
Body Material:	316 SS (CF8M)		Disc Material:	316 SS			Spring:	Stainless Steel		
Size:	2"	2-1/2"	3"	4"	5"	6"	8"	10"	12"	
Item Price:	3205.00	3720.00	4930.00	7475.00	10745.00	12110.00	21875.00	35500.00	64200.00	
Item Weight - Lbs.:	14	23	26	59	74	96	178	288	350	
Size:	16"	18"	20"	24"						
Item Price:	P.O.A.	P.O.A.	P.O.A.	P.O.A.						
Item Weight - Lbs.:										

Soft Seats for Silent Check Valves

ITEM: Soft Seat Adder for Silent Check Valves										
Material	Viton									
Size:	2"	2-1/2"	3"	4"	5"	6"	8"	10"	12"	
Item Price:	644.00	686.00	690.00	925.00	965.00	1010.00	1095.00	1185.00	1200.00	

Foot Valves

ITEM #: FV125FIBB										
M.A.W.P.:	200/150 psig at 150 F		End Connection:	125 lb. FF Flanged			Seat Material:	Buna-N		
Body Material:	Ductile Iron		Disc Material:	Bronze			Spring:	None		
Size:	2"	2-1/2"	3"	4"	5"	6"	8"	10"	12"	14"
Item Price:	1165.00	1430.00	1595.00	2055.00	2615.00	3380.00	4185.00	6350.00	9080.00	13850.00
Item Weight - Lbs.:	25	32	45	70	90	115	181	265	425	550
Size:	16"									
Item Price:	P.O.A.									
Item Weight - Lbs.:	695									

ITEM #: FV150FSSSB										
M.A.W.P.:	285 psig at 100 F		End Connection:	150 lb. RF Flanged			Seat Material:	Buna-N		
Body Material:	Carbon Steel (WCB)		Disc Material:	316 SS			Spring:	None		
Size:	2"	2-1/2"	3"	4"	5"	6"	8"	10"	12"	14"
Item Price:	1445.00	1685.00	1915.00	2590.00	3235.00	3670.00	5715.00	8185.00	11865.00	P.O.A.
Item Weight - Lbs.:	32	42	55	88	110	140	215	310	500	550
Size:	16"	18"	20"	24"						
Item Price:	P.O.A.	P.O.A.	P.O.A.	P.O.A.						
Item Weight - Lbs.:	695									

Foot Valves Cont'd

ITEM #:		FV150FSSSV								
M.A.W.P.:	275 psig at 100 F	End Connection:			150 lb. RF Flanged			Seat Material:		Viton
Body Material:	316 SS	Disc Material:			316 SS			Spring:		None
Size:	2"	2-1/2"	3"	4"	5"	6"	8"	10"	12"	14"
Item Price:	2500.00	3175.00	4100.00	5090.00	6865.00	7735.00	12830.00	19695.00	35090.00	P.O.A.
Item Weight - Lbs.:	32	42	55	88	110	140	215	310	500	550
Size:	16"	18"	20"	24"						
Item Price:	P.O.A.	P.O.A.	P.O.A.	P.O.A.						
Item Weight - Lbs.:	695									

Resilient Seated Butterfly Valves

ITEM #:		BI126WDDDB/EB									Operator:		Bare
M.A.W.P.:	200/150 psig at 150 F	End Connection:			Wafer			Seat Material:		Buna-N / EPDM			
Body Material:	Ductile Iron	Disc Material:			Ductile Iron			Shaft Material:		416 SS			
Size:	2"	2-1/2"	3"	4"	5"	6"	8"	10"	12"	14"			
Item Price:	48.00	61.00	72.00	100.00	137.00	159.00	244.00	370.00	510.00	721.00			
Item Weight - Lbs.:	6	7	10	13	18	20	32	42	70	95			
Size:	16"	18"	20"	24"	30"	36"	42"	48"					
Item Price:	1224.00	1509.00	1814.00	3296.00	P.O.A.	P.O.A.	P.O.A.	P.O.A.					
Item Weight - Lbs.:	117	165	275	440									

ITEM #:		BI126WDBB/EB									Operator:		Bare
M.A.W.P.:	200/150 psig at 150 F	End Connection:			Wafer			Seat Material:		Buna-N / EPDM			
Body Material:	Ductile Iron	Disc Material:			Bronze			Shaft Material:		416 SS			
Size:	2"	2-1/2"	3"	4"	5"	6"	8"	10"	12"	14"			
Item Price:	64.00	83.00	99.00	167.00	231.00	294.00	486.00	829.00	1225.00	1734.00			
Item Weight - Lbs.:	6	7	10	13	18	20	32	42	70	95			
Size:	16"	18"	20"	24"	30"	36"	42"	48"					
Item Price:	2742.00	3567.00	4561.00	7953.00	P.O.A.	P.O.A.	P.O.A.	P.O.A.					
Item Weight - Lbs.:	117	165	275	440									

ITEM #:		BI126WDSBB/EB									Operator:		Bare
M.A.W.P.:	200/150 psig at 150 F	End Connection:			Wafer			Seat Material:		Buna-N / EPDM			
Body Material:	Ductile Iron	Disc Material:			316 SS			Shaft Material:		316 SS			
Size:	2"	2-1/2"	3"	4"	5"	6"	8"	10"	12"	14"			
Item Price:	59.00	75.00	90.00	143.00	198.00	245.00	397.00	660.00	961.00	1382.00			
Item Weight - Lbs.:	6	7	10	13	18	20	32	42	70	95			
Size:	16"	18"	20"	24"	30"	36"	42"	48"					
Item Price:	2205.00	2823.00	3584.00	6280.00	P.O.A.	P.O.A.	P.O.A.	P.O.A.					
Item Weight - Lbs.:	117	165	275	440									

ITEM #:		BI126WDSSTB									Operator:		Bare
M.A.W.P.:	200 psig at 150 F	End Connection:			Wafer			Seat Material:		Teflon			
Body Material:	Ductile Iron	Disc Material:			316 SS			Shaft Material:		316 SS			
Size:	2"	2-1/2"	3"	4"	5"	6"	8"	10"	12"				
Item Price:	91.00	125.00	153.00	228.00	306.00	390.00	618.00	970.00	1519.00				
Item Weight - Lbs.:	6	7	10	13	18	20	32	42	70				

Resilient Seated Butterfly Valves Cont'd

ITEM #:	BI126WDSSVB										Operator:	Bare
M.A.W.P.:	200 psig at 150 F		End Connection:		Wafer		Seat Material:		Viton			
Body Material:	Ductile Iron		Disc Material:		316 SS		Shaft Material:		316 SS			
Size:	2"	2-1/2"	3"	4"	5"	6"	8"	10"	12"	14"		
Item Price:	116.00	142.00	174.00	237.00	372.00	444.00	649.00	1080.00	1546.00	2103.00		
Item Weight - Lbs.:	6	7	10	13	18	20	32	42	70	95		
Size:	16"	18"	20"	24"	30"	36"	42"	48"				
Item Price:	3417.00	4310.00	5188.00	9422.00	P.O.A.	P.O.A.	P.O.A.	P.O.A.				
Item Weight - Lbs.:	195	230	396	610								

ITEM #:	BI126LDDDB/EB										Operator:	Bare
M.A.W.P.:	200/150 psig at 150 F		End Connection:		Lug		Seat Material:		Buna-N / EPDM			
Body Material:	Ductile Iron		Disc Material:		Ductile Iron		Shaft Material:		416 SS			
Size:	2"	2-1/2"	3"	4"	5"	6"	8"	10"	12"	14"		
Item Price:	70.00	84.00	94.00	132.00	175.00	206.00	316.00	468.00	670.00	864.00		
Item Weight - Lbs.:	7	8	14	26	28	31	49	72	105	155		
Size:	16"	18"	20"	24"	30"	36"	42"	48"				
Item Price:	1546.00	1980.00	2559.00	3887.00	P.O.A.	P.O.A.	P.O.A.	P.O.A.				
Item Weight - Lbs.:	195	230	396	610								

ITEM #:	BI126LDBB/EB										Operator:	Bare
M.A.W.P.:	200/150 psig at 150 F		End Connection:		Lug		Seat Material:		Buna-N / EPDM			
Body Material:	Ductile Iron		Disc Material:		Bronze		Shaft Material:		416 SS			
Size:	2"	2-1/2"	3"	4"	5"	6"	8"	10"	12"	14"		
Item Price:	82.00	106.00	119.00	199.00	268.00	334.00	543.00	927.00	1377.00	1948.00		
Item Weight - Lbs.:	7	8	14	26	28	31	49	72	105	155		
Size:	16"	18"	20"	24"	30"	36"	42"	48"				
Item Price:	3052.00	3981.00	5290.00	8529.00	P.O.A.	P.O.A.	P.O.A.	P.O.A.				
Item Weight - Lbs.:	195	230	396	610								

ITEM #:	BI126LDSSB/EB										Operator:	Bare
M.A.W.P.:	200/150 psig at 150 F		End Connection:		Lug		Seat Material:		Buna-N / EPDM			
Body Material:	Ductile Iron		Disc Material:		316 SS		Shaft Material:		316 SS			
Size:	2"	2-1/2"	3"	4"	5"	6"	8"	10"	12"	14"		
Item Price:	81.00	96.00	112.00	175.00	236.00	293.00	470.00	1031.00	1223.00	1628.00		
Item Weight - Lbs.:	7	8	14	26	28	31	49	72	105	155		
Size:	16"	18"	20"	24"	30"	36"	42"	48"				
Item Price:	2532.00	3301.00	4340.00	6879.00	P.O.A.	P.O.A.	P.O.A.	P.O.A.				
Item Weight - Lbs.:	195	230	396	610								

ITEM #:	BI126LDSSTB										Operator:	Bare
M.A.W.P.:	200 psig at 150 F		End Connection:		Lug		Seat Material:		Teflon			
Body Material:	Ductile Iron		Disc Material:		316 SS		Shaft Material:		316 SS			
Size:	2"	2-1/2"	3"	4"	5"	6"	8"	10"	12"			
Item Price:	117.00	150.00	180.00	266.00	353.00	448.00	704.00	1415.00	1713.00			
Item Weight - Lbs.:	6	7	10	13	18	20	32	42	70			

ITEM #:	BI126LDSSVB										Operator:	Bare
M.A.W.P.:	200 psig at 150 F		End Connection:		Lug		Seat Material:		Viton			
Body Material:	Ductile Iron		Disc Material:		316 SS		Shaft Material:		316 SS			
Size:	2"	2-1/2"	3"	4"	5"	6"	8"	10"	12"	14"		
Item Price:	138.00	163.00	196.00	305.00	410.00	493.00	721.00	1451.00	1708.00	2260.00		
Item Weight - Lbs.:	6	7	10	13	18	20	32	42	70	95		
Size:	16"	18"	20"	24"	30"	36"	42"	48"				
Item Price:	3743.00	4789.00	5944.00	10022.00	P.O.A.	P.O.A.	P.O.A.	P.O.A.				
Item Weight - Lbs.:	195	230	396	610								

OPERATOR OPTIONS for Resilient Seated Butterfly Valves

ITEM:	Price Adders for Lever Handle c/w 10 Position Plate									
Size:	2"	2-1/2"	3"	4"	5"	6"	8"	10"	12"	
Item Price:	11.00	11.00	11.00	11.00	11.00	11.00	12.00	24.00	24.00	
Item Weight - Lbs.:	2	2	2	2	2	2	4	4	4	

ITEM:	Price Adders for Manual Gear c/w Wheel										
Size:	2"	2-1/2"	3"	4"	5"	6"	8"	10"	12"	14"	
Item Price:	56.00	56.00	56.00	56.00	56.00	56.00	107.00	107.00	121.00	121.00	
Item Weight - Lbs.:	10	10	10	10	10	10	28	28	33	33	
Size:	16"	18"	20"	24"	30"	36"	42"	48"			
Item Price:	405.00	405.00	405.00	714.00	P.O.A.	P.O.A.	P.O.A.	P.O.A.			
Item Weight - Lbs.:	71	71	80	80							

High Performance Butterfly Valves

MODEL	HB150WSSRL/G										Operator:	2" THRU 6" C/W LEVER; 8" & UP WITH GEAR													
M.A.W.P.	285 psig at 100 F					End Connection:					Wafer					Seat:					RTFE				
Body:	Carbon Steel (WCB)					Disc:					316 SS					Shaft:					316 SS				
Size	2"	2-1/2"	3"	4"	5"	6"	8"	10"	12"	14"															
Item Price:	900.00	975.00	1050.00	1349.00	1749.00	2149.00	3697.00	4546.00	6445.00	7844.00															
Unit Weight - Lbs	16	22	29	46	51	61	98	145	200	232															
Size	16"	18"	20"	24"																					
Item Price:	9542.00	11990.00	15087.00	21182.00																					
Unit Weight - Lbs	300	402	500	754																					

MODEL	HB150LSSRL/G										Operator:	2" THRU 6" C/W LEVER; 8" & UP WITH GEAR													
M.A.W.P.	285 psig at 100 F					End Connection:					Lug					Seat:					RTFE				
Body:	Carbon Steel (WCB)					Disc:					316 SS					Shaft:					316 SS				
Size	2"	2-1/2"	3"	4"	5"	6"	8"	10"	12"	14"															
Item Price:	1000.00	1100.00	1199.00	1799.00	1999.00	2249.00	3897.00	4896.00	7044.00	8443.00															
Unit Weight - Lbs	17	27	37	50	58	68	107	161	233	260															
Size	16"	18"	20"	24"																					
Item Price:	10741.00	13389.00	17185.00	23380.00																					
Unit Weight - Lbs	365	512	622	930																					

MODEL	HB150WSSSSL/G										Operator:	2" THRU 6" C/W LEVER; 8" & UP WITH GEAR													
M.A.W.P.	275 psig at 100 F					End Connection:					Wafer					Seat:					RTFE				
Body:	316 SS (CF8M)					Disc:					316 SS					Shaft:					316 SS				
Size	2"	2-1/2"	3"	4"	5"	6"	8"	10"	12"	14"															
Item Price:	1050.00	1199.00	1349.00	1949.00	2398.00	3098.00	4896.00	5945.00	8443.00	10441.00															
Unit Weight - Lbs	16	22	29	46	51	61	98	145	200	232															
Size	16"	18"	20"	24"																					
Item Price:	12939.00	16236.00	19783.00	27676.00																					
Unit Weight - Lbs	300	402	500	754																					

MODEL	HB150LSSSSL/G										Operator:	2" THRU 6" C/W LEVER; 8" & UP WITH GEAR													
M.A.W.P.	275 psig at 100 F					End Connection:					Lug					Seat:					RTFE				
Body:	316 SS (CF8M)					Disc:					316 SS					Shaft:					316 SS				
Size	2"	2-1/2"	3"	4"	5"	6"	8"	10"	12"	14"															
Item Price:	1249.00	1399.00	1549.00	2298.00	2648.00	3348.00	5296.00	6695.00	9942.00	12340.00															
Unit Weight - Lbs	17	27	37	50	58	68	107	161	233	260															
Size	16"	18"	20"	24"																					
Item Price:	16186.00	19933.00	25778.00	33771.00																					
Unit Weight - Lbs	365	512	622	930																					

High Performance Butterfly Valves Cont'd

MODEL	HB300WSSRL/G										Operator: 2" THRU 6" C/W LEVER; 8" & UP WITH GEAR	
M.A.W.P.	740 psig at 100 F				End Connection:		Wafer		Seat:		RTFE	
Body:	Carbon Steel (WCB)				Disc:		316 SS		Shaft:		316 SS	
Size	2"	2-1/2"	3"	4"	5"	6"	8"	10"	12"	14"		
Item Price:	950.00	1025.00	1100.00	1399.00	1899.00	2199.00	3797.00	4746.00	6844.00	8243.00		
Unit Weight - Lbs	16	20	28	46	53	65	127	180	229	274		
Size	16"	18"	20"	24"								
Item Price:	10641.00	13039.00	17185.00	23230.00								
Unit Weight - Lbs	441	644	754	952								

MODEL	HB300LSSRL/G										Operator: 2" THRU 6" C/W LEVER; 8" & UP WITH GEAR	
M.A.W.P.	740 psig at 100 F				End Connection:		Lug		Seat:		RTFE	
Body:	Carbon Steel (WCB)				Disc:		316 SS		Shaft:		316 SS	
Size	2"	2-1/2"	3"	4"	5"	6"	8"	10"	12"	14"		
Item Price:	1100.00	1199.00	1299.00	1899.00	2149.00	2498.00	4197.00	5596.00	7594.00	10092.00		
Unit Weight - Lbs	17	25	37	50	66	87	167	260	288	529		
Size	16"	18"	20"	24"								
Item Price:	12538.00	16536.00	20183.00	28176.00								
Unit Weight - Lbs	665	842	1040	1590								

MODEL	HB300WSSSSRL/G										Operator: 2" THRU 6" C/W LEVER; 8" & UP WITH GEAR	
M.A.W.P.	720 psig at 100 F				End Connection:		Wafer		Seat:		RTFE	
Body:	316 SS (CF8M)				Disc:		316 SS		Shaft:		316 SS	
Size	2"	2-1/2"	3"	4"	5"	6"	8"	10"	12"	14"		
Item Price:	1199.00	1399.00	1549.00	2149.00	2598.00	3249.00	5246.00	6545.00	9692.00	11840.00		
Unit Weight - Lbs	16	20	28	46	53	65	127	180	229	274		
Size	16"	18"	20"	24"								
Item Price:	15087.00	18984.00	25827.00	32921.00								
Unit Weight - Lbs	441	644	754	952								

MODEL	HB300LSSSSRL/G										Operator: 2" THRU 6" C/W LEVER; 8" & UP WITH GEAR	
M.A.W.P.	720 psig at 100 F				End Connection:		Lug		Seat:		RTFE	
Body:	316 SS (CF8M)				Disc:		316 SS		Shaft:		316 SS	
Size	2"	2-1/2"	3"	4"	5"	6"	8"	10"	12"	14"		
Item Price:	1399.00	1599.00	1899.00	2498.00	2898.00	3897.00	6045.00	8543.00	11241.00	16986.00		
Unit Weight - Lbs	17	25	37	50	66	87	167	260	288	529		
Size	16"	18"	20"	24"								
Item Price:	20283.00	28825.00	34120.00	46859.00								
Unit Weight - Lbs	665	842	1040	1590								

MODEL	HB600WSSRL/G										Operator: 2" THRU 6" C/W LEVER; 8" & UP WITH GEAR	
M.A.W.P.	1480 psig at 100F				End Connection:		Wafer		Seat:		RTFE	
Body:	Carbon Steel (WCB)				Disc:		316SS		Shaft:		316SS	
Size	2"	2-1/2"	3"	4"	5"	6"	8"	10"	12"	14"		
Item Price:	2099.00	2598.00	3098.00	3148.00	4147.00	4846.00	6595.00	10441.00	15087.00	18135.00		
Unit Weight - Lbs												
Size	16"	18"	20"	24"								
Item Price:	23430.00	28675.00	37817.00	51105.00								
Unit Weight - Lbs												

High Performance Butterfly Valves Cont'd

MODEL	HB600LSSSRL/G										Operator:	2" THRU 6" C/W LEVER; 8" & UP WITH GEAR													
M.A.W.P.	1480 psig at 100F					End Connection:					Lug					Seat:					RTFE				
Body:	Carbon Steel (WCB)					Disc:					316SS					Shaft:					316SS				
Size	2"		2-1/2"		3"		4"		5"		6"		8"		10"		12"		14"						
Item Price:	2298.00		3048.00		3647.00		3897.00		4546.00		5446.00		7644.00		13589.00		16186.00		21382.00						
Unit Weight - Lbs																									
Size	16"		18"		20"		24"																		
Item Price:	26127.00		33771.00		41664.00		56151.00																		
Unit Weight - Lbs																									

MODEL	HB600WSSSRL/G										Operator:	2" THRU 6" C/W LEVER; 8" & UP WITH GEAR													
M.A.W.P.	1440 psig at 100F					End Connection:					Wafer					Seat:					RTFE				
Body:	316SS (CF8M)					Disc:					316SS					Shaft:					316SS				
Size	2"		2-1/2"		3"		4"		5"		6"		8"		10"		12"		14"						
Item Price:	2648.00		3098.00		3447.00		4746.00		5745.00		6645.00		9812.00		14438.00		21332.00		26078.00						
Unit Weight - Lbs																									
Size	16"		18"		20"		24"																		
Item Price:	33221.00		41764.00		56850.00		72427.00																		
Unit Weight - Lbs																									

MODEL	HB600LSSSSRL/G										Operator:	2" THRU 6" C/W LEVER; 8" & UP WITH GEAR													
M.A.W.P.	1440 psig at 100F					End Connection:					Lug					Seat:					RTFE				
Body:	316SS (CF8M)					Disc:					316SS					Shaft:					316SS				
Size	2"		2-1/2"		3"		4"		5"		6"		8"		10"		12"		14"						
Item Price:	3098.00		3547.00		4197.00		5496.00		6395.00		7394.00		10841.00		20433.00		24328.00		37368.00						
Unit Weight - Lbs																									
Size	16"		18"		20"		24"																		
Item Price:	40615.00		54203.00		66092.00		86924.00																		
Unit Weight - Lbs																									

Operator Options for High Performance Butterfly Valve

ITEM:	Price Adders: Manual Gear, c/w Handwheel																			
Size:	2"		2-1/2"		3"		4"		5"		6"									
Item Price:	340.00		340.00		340.00		340.00		340.00		340.00									
Item Weight - Lbs.:	1.5		2		2		2		3		4									

Replacement Parts - High Performance Butterfly Valve

ITEM:	Replacement RTFE Seats																			
Size	2"		2-1/2"		3"		4"		5"		6"		8"		10"		12"		14"	
Item Price:	87.00		112.00		112.00		182.00		210.00		250.00		400.00		520.00		870.00		936.00	
Size	16"		18"		20"		24"													
Item Price:	1267.00		2101.00		2458.00		3535.00													
ITEM:	Replacement Packing																			
Size	2"		2-1/2"		3"		4"		5"		6"		8"		10"		12"		14"	
Item Price:	52.00		52.00		52.00		54.00		55.00		57.00		61.00		69.00		77.00		114.00	
Size	16"		18"		20"		24"													
Item Price:	135.00		147.00		303.00		338.00													
ITEM:	Replacement Gasket																			
Size	2"		2-1/2"		3"		4"		5"		6"		8"		10"		12"		14"	
Item Price:	8.00		8.00		8.00		10.00		10.00		10.00		13.00		16.00		18.00		18.00	
Size	16"		18"		20"		24"													
Item Price:	21.00		21.00		29.00		37.00													

Flanged Triple Duty Valves

ITEM #: TD125FIBE										
M.A.W.P.:	200 psig at 150 F		End Connection:	125 Lb. FF Flanged			Disc Material:	Bronze		
Body Material:	Cast Iron		Guide:	Cast Iron			O-Ring:	EPDM		
Size:	2"	2 1/2"	3"	4"	5"	6"	8"	10"	12"	14"
Item Price:	410.00	500.00	625.00	1285.00	1815.00	2300.00	3815.00	5730.00	9300.00	11560.00
Item Weight - Lbs.:	34	40	50	100	155	200	350	480	660	790

ITEM #: TD125FIDE										
M.A.W.P.:	200 psig at 150 F		End Connection:	125 Lb. FF Flanged			Disc Material:	C.I. Nickel Plated		
Body Material:	Cast Iron		Guide:	Cast Iron			O-Ring:	EPDM		
Size:	2"	2 1/2"	3"	4"	5"	6"	8"	10"	12"	14"
Item Price:	345.00	415.00	515.00	1105.00	1475.00	1865.00	3185.00	4970.00	7915.00	9540.00
Item Weight - Lbs.:	34	40	50	100	155	200	350	480	660	790

N.P.T. and Flanged Drip Pan Elbows

ITEM #: D125PE										
M.A.W.P.:	200 psig at 150 F		End Connection:	3/4" - 4", N.P.T.			6" & 8", 125 Lb. FF Flanged			
Body Material:	Cast Iron									
Size:	3/4"	1"	1 1/4"	1 1/2"	2"	2 1/2"	3"	4"	6"	8"
Item Price:	22.00	22.00	73.00	73.00	83.00	115.00	180.00	220.00	560.00	1045.00
Item Weight - Lbs.:	2	2	7.5	7.5	8.5	12	19	25	105	202

Air Vents

ITEM #: AR150										
M.A.W.P.:	150 psig at 250 F		End Connection:	N.P.T.			Seat:	Viton		
Body Material:	Cast Iron					Other Wetted:	300 Series SS			
Size:	3/4"	1"	1 1/4"	1 1/2"	2"	2 1/2"	3"	4"	6"	8"
Item Price:	140.00									
Item Weight - Lbs.:	6									

Neoprene Connectors

ITEM #: AUM (CTNT)										
M.A.W.P.:	150 psig at 200 F		End Connection:	N.P.T.			Style:	Twin		
Elastomer:	Neoprene		Reinforcement:	Nylon Cloth			Union:	Zinc Plated C.I.		
Size:	1/2"	3/4"	1"	1-1/4"	1-1/2"	2"	2-1/2"	3"		
Item Price:	29.00	29.00	41.00	50.00	63.00	76.00	P.O.A.	P.O.A.		
Item Weight - Lbs.:	1	2	3	4	5	6				

ITEM #: ASM (CFNS)										
M.A.W.P.:	200/100 psig at 200 F		End Connection:	Flanged			Style:	Single		
Elastomer:	Neoprene		Reinforcement:	Synthetic			Flanges:	Zinc Plated C.S.		
Size:	1-1/4"	1-1/2"	2"	2-1/2"	3"	4"	5"	6"	8"	10"
Item Price:	61.00	68.00	78.00	106.00	130.00	170.00	230.00	295.00	425.00	620.00
Item Weight - Lbs.:	5	6	8	12	14	18	23	26	40	56
Size:	12"	14"	16"	18"	20"	24"				
Item Price:	875.00	990.00	1240.00	1370.00	1650.00	2280.00				
Item Weight - Lbs.:	85	99	128	134	155	155				

Neoprene Connectors Cont'd

ITEM #: ATM (CFNT)											
M.A.W.P.:	200/100 psig at 200 F			End Connection:	Flanged			Style:	Twin		
Elastomer:	Neoprene			Reinforcement:	Synthetic			Flanges:	Zinc Plated C.S.		
Size:	1-1/2"	2"	2-1/2"	3"	4"	5"	6"	8"	10"	12"	
Item Price:	75.00	95.00	125.00	145.00	210.00	260.00	340.00	535.00	680.00	940.00	
Item Weight - Lbs.:	6	8	12	14	18	23	28	45	62	90	

Unibody Threaded End Ball Valves

ITEM #: 1RB20TCSCO Firesafe											
M.A.W.P.:	2000 psig at 100 F			End Connection:	N.P.T.			Operator:	Oval Latching		
Body / Ball	Carbon (WCB)/316 SS			Type and Port:	1 pc Reduded Port			Seat Material:	Polycarbon		
Size:	1/4"	3/8"	1/2"	3/4"	1"	1-1/4"	1-1/2"	2"			
Item Price:	60.00	60.00	60.00	66.20	87.00	124.00	165.00	215.00			
Item Weight - Lbs.:	0.66	0.68	0.75	0.95	2	3	3.5	5			

ITEM #: 1RB20TCSSCO Firesafe											
M.A.W.P.:	2000 psig at 100 F			End Connection:	N.P.T.			Operator:	Oval Latching		
Body / Ball	316SS (CF8M)/316			Type and Port:	1 pc Reduded Port			Seat Material:	Polycarbon		
Size:	1/4"	3/8"	1/2"	3/4"	1"	1-1/4"	1-1/2"	2"			
Item Price:	75.00	75.00	75.00	85.00	118.00	175.00	240.00	315.00			
Item Weight - Lbs.:	0.66	0.68	0.75	0.95	2	2.25	3.5	5			

Two Piece Threaded End Ball Valves

ITEM #: 2FB6TBBTN (NPT End)											
M.A.W.P.:	600 psig at 100 F			End Connection:	N.P.T.			Operator:	Lever (no latch)		
Body / Ball	Brass / Brass			Type and Port:	2 pc Full Port			Seat Material:	Teflon		
Size:	1/4"	3/8"	1/2"	3/4"	1"	1-1/4"	1-1/2"	2"	2-1/2"	3"	
Item Price:	8.65	8.75	14.50	21.00	29.00	49.00	68.00	102.00	210.00	270.00	
Item Weight - Lbs.:	0.27	0.27	0.3	0.57	0.84	1.27	2.04	3.13	6.01	10.09	
Size:	4"										
Item Price:	505.00										
Item Weight - Lbs.:	18.60										

ITEM #: 2FB6SBBTN (Sweat End)											
M.A.W.P.:	600 psig at 100 F			End Connection:	N.P.T.			Operator:	Lever (no latch)		
Body / Ball	Brass / Brass			Type and Port:	2 pc Full Port			Seat Material:	Teflon		
Size:	1/2"	3/4"	1"	1-1/4"	1-1/2"	2"	2-1/2"	3"	4"		
Item Price:	12.80	21.15	29.00	46.50	70.00	101.00	186.00	270.00	435.00		
Item Weight - Lbs.:	0.30	0.57	0.84	1.27	2.04	3.13	6.01	10.09	18.6		

ITEM #: 2FB10TSSRL											
M.A.W.P.:	1000 psig at 100 F			End Connection:	N.P.T.			Operator:	Latching Lever		
Body / Ball	316SS (CF8M)/316			Type and Port:	2 pc Full Port			Seat Material:	RTFE		
Size:	1/4"	3/8"	1/2"	3/4"	1"	1-1/4"	1-1/2"	2"	2-1/2"	3"	
Item Price:	35.60	35.60	40.70	61.00	89.00	127.00	195.00	300.00	580.00	790.00	
Item Weight - Lbs.:	0.53	0.53	0.66	1.04	1.68	2.49	3.86	5.93	12.39	16.53	

Two Piece Threaded End Ball Valves Cont'd

ITEM #: 2SB900TC SCL											
M.A.W.P.:	2220 psig at 100 F			End Connection:	N.P.T.			Operator:	Latching Lever		
Body / Ball	Carbon (WCB)/316 SS			Type and Port:	2 pc Standard Port			Seat Material:	Polycarbon		
Size:	1/4"	3/8"	1/2"	3/4"	1"	1-1/4"	1-1/2"	2"			
Item Price:	61.00	61.00	61.00	90.00	109.00	158.00	213.00	278.00			
Item Weight - Lbs.:	0.46	0.46	0.41	0.81	1.11	1.82	2.39	3.66			

ITEM #: 2SB900TSSRL											
M.A.W.P.:	2160 psig at 100 F			End Connection:	N.P.T.			Operator:	Latching Lever		
Body / Ball	316SS (CF8M)/316			Type and Port:	2 pc Standard Port			Seat Material:	RTFE		
Size:	1/4"	3/8"	1/2"	3/4"	1"	1-1/4"	1-1/2"	2"			
Item Price:	74.00	74.00	74.00	108.00	133.00	204.00	276.00	362.00			
Item Weight - Lbs.:	0.46	0.46	0.41	0.81	1.11	1.82	2.39	3.66			

Three Piece Threaded End Ball Valves

ITEM #: 3FB10TSSRL / 3FB10SWSSRL											
M.A.W.P.:	1000 psig at 100 F			End Connection:	N.P.T. / Socket Weld			Operator:	Latching Lever		
Body / Ball	316SS (CF8M)/316			Type and Port:	3 pc Full Port			Seat Material:	RTFE		
Size:	1/4"	3/8"	1/2"	3/4"	1"	1-1/4"	1-1/2"	2"	2-1/2"	3"	
Item Price:	52.00	52.00	65.00	89.00	125.00	185.00	265.00	380.00	710.00	1045.00	
Item Weight - Lbs.:	1.00	1.25	1.54	1.98	2.98	4.85	6.39	10.14	15	19	
Size:	4"										
Item Price:	2035.00										
Item Weight - Lbs.:	24.00										

ITEM #: 3SB20TC SCL / 3SB20SWC SCL											
M.A.W.P.:	2000 psig at 100 F			End Connection:	N.P.T.			Operator:	Latching Lever		
Body / Ball	Carbon (WCB)/316 SS			Type and Port:	3 pc Standard Port			Seat Material:	Polycarbon		
Size:	1/2"	3/4"	1"	1-1/4"	1-1/2"	2"					
Item Price:	112.00	137.00	197.00	327.00	345.00	515.00					
Item Weight - Lbs.:	1.75	2.5	4	6	7.5	11					

ITEM #: 3SB20TSSRL / 3SB20SWSSRL											
M.A.W.P.:	2000 psig at 100 F			End Connection:	N.P.T.			Operator:	Latching Lever		
Body / Ball	316SS (CF8M)/316			Type and Port:	3 pc Standard Port			Seat Material:	RTFE		
Size:	1/2"	3/4"	1"	1-1/4"	1-1/2"	2"					
Item Price:	93.50	115.00	164.00	273.00	287.00	427.00					
Item Weight - Lbs.:	1.75	2.5	4	6	7.5	11					

Split Body Flanged Ball Valves

ITEM #: 2FB150FC SCL											
M.A.W.P.:	285 psig at 100 F			End Connection:	150 lb. RF Flg			Operator:	Lever / Gear		
Body / Ball	Carbon (WCB)/316 SS			Type and Port:	2 pc Split Body FP			Seat Material:	Polycarbon		
Size:	1/2"	3/4"	1"	1-1/2"	2"	2-1/2"	3"	4"	6"	8"	
Item Price:	138.00	173.00	215.00	380.00	450.00	810.00	1010.00	1545.00	3130.00	P.O.A.	
Item Weight - Lbs.:	3.56	4.83	6.88	13.4	19.49	30.58	41.34	69.02	153.49	250	
Size:	10"										
Item Price:	P.O.A.										
Item Weight - Lbs.:	350										

ITEM #: 2FB150FSSRL										
M.A.W.P.:	275 psig at 100 F		End Connection:		150 lb. RF Flg		Operator:		Lever / Gear	
Body / Ball	316SS (CF8M)/316		Type and Port:		2 pc Split Body FP		Seat Material:		RTFE	
Size:	1/2"	3/4"	1"	1-1/2"	2"	2-1/2"	3"	4"	6"	8"
Item Price:	185.00	240.00	295.00	530.00	725.00	1260.00	1590.00	2240.00	5635.00	P.O.A.
Item Weight - Lbs.:	3.56	4.83	6.88	13.4	19.49	30.58	41.34	69.02	153.49	250
Size:	10"									
Item Price:	P.O.A.									
Item Weight - Lbs.:	350									

ITEM #: 2FB300FCSSL										
M.A.W.P.:	740 psig at 100 F		End Connection:		300 lb. RF Flg		Operator:		Lever / Gear	
Body / Ball	Carbon (WCB)/316 SS		Type and Port:		2 pc Split Body FP		Seat Material:		Polycarbon	
Size:	1/2"	3/4"	1"	1-1/2"	2"	2-1/2"	3"	4"	6"	8"
Item Price:	256.67	305.56	354.44	598.89	733.33	P.O.A.	1430.00	2248.89	4558.89	P.O.A.
Item Weight - Lbs.:	4.85	7.94	10.25	18.94	23.99	30.58	41.34	69.02	153.49	

ITEM #: 2FB300FSSRL										
M.A.W.P.:	720 psig at 100 F		End Connection:		300 lb. RF Flg		Operator:		Lever / Gear	
Body / Ball	316SS (CF8M)/316		Type and Port:		2 pc Split Body FP		Seat Material:		RTFE	
Size:	1/2"	3/4"	1"	1-1/2"	2"	2-1/2"	3"	4"	6"	8"
Item Price:	330.00	403.33	501.11	850.00	1033.33	P.O.A.	2267.78	3538.89	7113.33	25177.78
Item Weight - Lbs.:	4.85	7.94	10.25	18.94	23.99	30.58	41.34	69.02	153.49	250

SECTION 1 - GENERAL

- Standard Payment Terms: Net 30 days
- Outside North America: Telephone Wire Transfers before Shipping. Net 30 day terms may be granted subject to credit approval.
- Written quotations are valid for a period of thirty days after issue.
- The seller reserves the right to change the value of the quotation at any time in writing before an order is accepted.
- Verbal quotations are valid for 24 hours unless confirmed to the purchaser in writing.
- Item pricing, stenographic and clerical errors are subject to correction without notice. The Seller reserves the right to alter dimensions without notice. Apply for certified drawings.
- The products sold in this price book are not designed, sold or intended for personal, family or household purposes.

SECTION 2 - LIQUIDATION DAMAGES

- Purchase orders containing penalty charges for failing to meet delivery must be agreed to and accepted in writing by an authorized signing officer.
- Quoted delivery dates are determined by conditions on that date. The delivery dates are subject to change due to uncontrollable causes.
- Under no circumstances will the Seller be liable for any damages due to late delivery.

SECTION 3 - CUSTOM MANUFACTURED PRODUCTS

- Item dimensions may change without notice. Please inquire about certified drawing for approval.
- Custom fabricated orders cannot be cancelled after the order has been approved and released for manufacturing by the purchaser.
- The purchaser will be held liable for the full purchase amount if the order is cancelled.

SECTION 4 - SHIPPING TERMS AND METHODS

- Standard Shipment Terms: F.O.B. Shipping Point unless stated in writing by the Seller.
- Items will be shipped the best way as determined by Seller unless stated otherwise by the Purchaser. The Purchaser is liable for all shipping charges incurred unless stated in writing by the Seller.
- All shipments will be packaged in accordance to domestic requirements. Export/Special Requirement crating, IE. Government, is available at an extra cost.

SECTION 5 - RETURNS AND CLAIMS

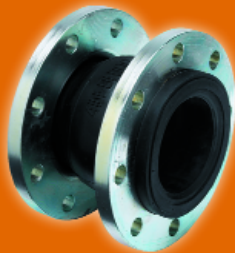
- All goods returned must be accompanied by a Return Authorization Number and reason issued in writing by the Seller otherwise the shipment will be refused by the Seller.
- Returns must be sent freight prepaid in order to be received at the Sellers dock.
- Items returned after a period of one year from ship date will receive zero dollar credit.
- A standard 25% re-stocking fee applies to returns of all cast product unless another amount is agreed on in writing by the Seller.
- A Zero credit will be applied to all custom fabricated products including screens and other manufactured and fitted products returned.
- Items returned due to defect will be examined by the seller before a credit amount is determined or the item will be repaired and returned to the Purchaser within 90 days of receipt by the Seller.
- The Purchaser will be held liable for any refinishing and handling charges of goods returned to the Seller.
- Claims must be submitted in writing to the Seller within 10 days of receiving the goods. If items are destroyed during shipment a claim is issued to the courier company and the damages must be noted on the freight bill before the Purchaser accepts the shipment.
- The Seller is not liable for any losses, costs, expenses or damages of any kind due to the product, its use, installation or replacement, labeling, instructions, information or technical data of any kind, description of product or use, sample or model, warnings or lack of any foregoing. No other warranties, written or oral, expressed or implied, including the warranties of fitness for a particular purpose and merchantability, are made or authorized. No affirmation of fact, promise, description of product of use or sample or model shall create any warranty from manufacturer, unless signed by the a signing officer of the company.

SECTION 6 - WARRANTY

- All items shall be free from defect in material and workmanship for a period of one year from date of shipment.

FOR STRAINERS, VALVES AND PIPELINE ACCESSORIES.

OUR KNOWLEDGE SETS US APART



Our Knowledge Sets us Apart.

Easy access to friendly help is always just a call or click away.

CANADA - 1145 Sutton Drive, Unit #3, Burlington, ON L7L 5Z8

Toll Free: 1.866.872.0072 Toll Free Fax: 1.866.872.0073 Local Calls: 905.335.8777 Local Fax: 905.335.0977

USA - PO Box 2989, Buffalo, NY 14240-2989

Visit us on the web at: www.islipflowcontrols.com